

# Service Station Operators Hit Hard By Fuel Shortages

The fuel shortage has hit service station operators hard. Many are reporting a 25 percent drop in sales since the beginning of the year. Some are even reporting a 50 percent drop. The shortage is causing a great deal of frustration among operators and customers alike.

Service station operators are reporting a 25 percent drop in sales since the beginning of the year. Some are even reporting a 50 percent drop. The shortage is causing a great deal of frustration among operators and customers alike.

Even Robert Walz, local Marathon supplier, has no idea what is to come. "All I know is that they cut my quota 40 percent, so I have to pass that percentage along to my customers," he says.

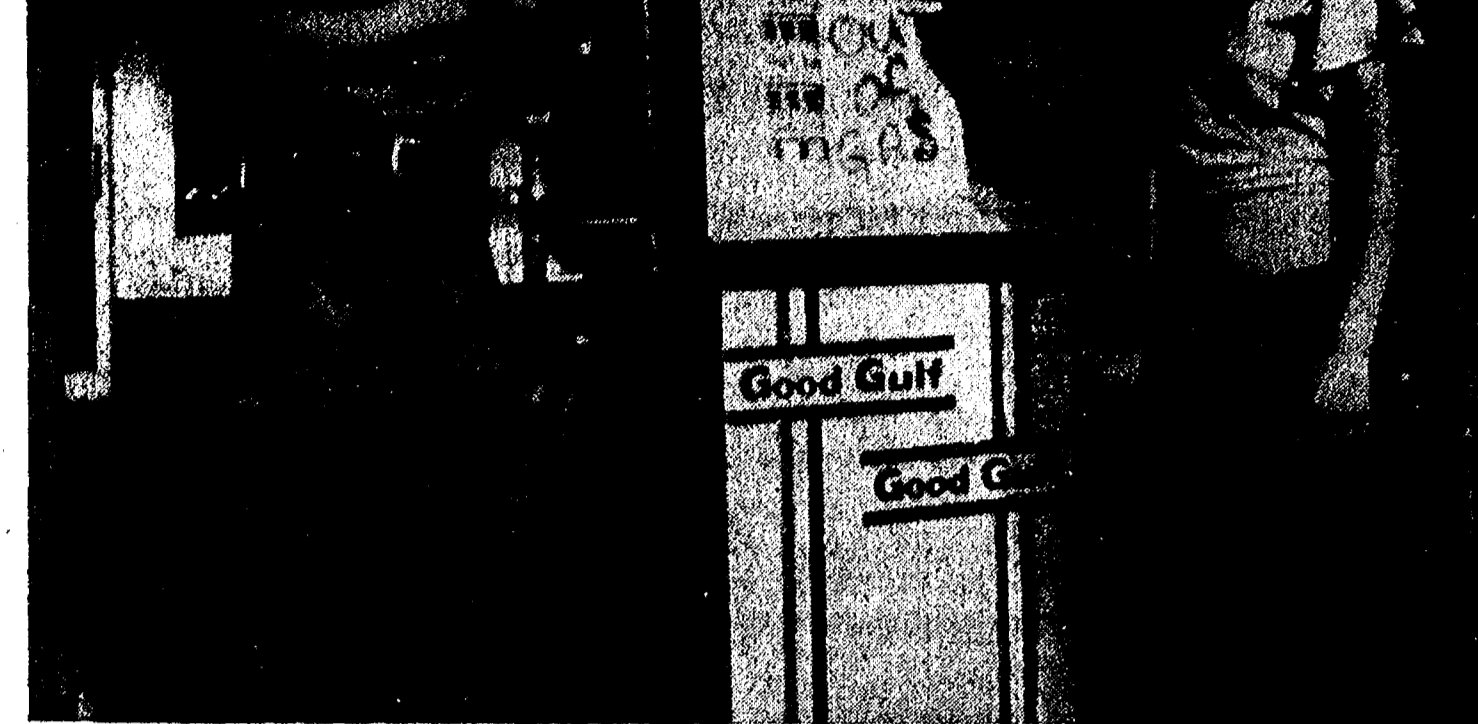
Although there seem to be no answers forthcoming, the question can be pointed. Fred Worden put it to his agent directly. "If Chekers gets all the fuel they want, why the hell can't I?" His indignation is based on understandable expectations.

By all reports, it's the independents, like the Checker and Quality that should be floundering during a shortage. They depend on the surpluses of the name brand companies. The mystery is why Chekers, of all the stations in town, should not be feeling the bite.

Dan Patrick, who has been pumping gas there several months, says the station has been promised just as much fuel as it wants. "Infact, there's enough gas now," he says, "that we can open up on Sundays again starting this Sunday."

This news comes just when most of the other stations in town are paring hours and locking up on Sundays. Patrick is not telling who's supplying the liquid gold, but other sources claim it's Marathon that's bringing in the supply in tank trucks.

Cavanaugh Lake Store is similarly exempt from pressure. It's (Continued on page six)



A WELL GONE DRY: Gallup-Silkworth's Pump & Pantry on Main St. was feeling the effects of a reported fuel shortage this week. Its regular gasoline pump dried up Sunday night after a busy day of handling vacationers and local folks who find it difficult to find stations open on Sundays these days. There was plenty of premium gas for those who could afford premium prices. Shown here with the sign are Pump & Pantry employees Ron Boham (left) and Joanne Schneider.

While the effects of the fuel situation are concrete, Ingersoll and others suspect the shortage itself is contrived. If there is indeed a shortage, which some doubt, it is the result of conscious decision in the high echelon, says Ingersoll.

Brad Smith of the Quality station speculates the shortage is man made, puffed up by the oil companies to make prices rise. Others agree, saying the companies want to exert pressure in order to win concessions concerning off-store drilling and the Alaskan pipeline.

What is the extent of the shortage? Answers are hard to come by. Gene Shoemaker, unhappy over the 40 percent cut-back Marathon handed him last week, has tried in vain to get a definite picture of the situation from fuel representatives in Detroit.

**WEATHER**

Month	Day	High	Low	Wind	Clouds
June 28	74	54	10-15	Partly	
June 29	76	56	10-15	Partly	
June 30	78	58	10-15	Partly	
July 1	80	60	10-15	Partly	
July 2	82	62	10-15	Partly	
July 3	84	64	10-15	Partly	
July 4	86	66	10-15	Partly	
July 5	88	68	10-15	Partly	
July 6	90	70	10-15	Partly	
July 7	92	72	10-15	Partly	
July 8	94	74	10-15	Partly	
July 9	96	76	10-15	Partly	
July 10	98	78	10-15	Partly	

# The Chelsea Standard

**QUOTE**  
"There is a great deal of unmapped country within us."  
—George Eliot.

ONE HUNDRED-FOURTH YEAR—No. 2      12 Pages This Week      CHELSEA, MICHIGAN, THURSDAY, JUNE 28, 1973      15c per copy      SUBSCRIPTION: \$4.00 PER YEAR

## Citizens Advisory Committee Reports Nearing Completion

The general chairman of the citizens advisory committee, V. O. Johnson, has called a meeting of all sub-committee chairmen for Friday evening, June 29, at 7 in his office at the Methodist Home. At this meeting Johnson intends to make final preparations, if possible, for the completion of sub-committee reports for submission to the Board of Education late in July.

Johnson also announced that Ed Brown has assumed the duties of chairman of the Sites and Facilities Sub-Committee. Brown replaces Robert Daniels, who has resigned this position following his recent election to the Board of Education. Brown, who has been an active member of this committee, will see that the progress of this committee will continue without delay.

## 'Fiddler' Cast Working Hard On Rehearsals

The cast of "Fiddler on the Roof," Chelsea's summer musical, is into its second month of rehearsals. Every night, Monday through Thursday, they transform the Chelsea High school auditorium into the song-and-tradition-filled town of Anatevka.

This week, the townspeople are preparing for the wedding of Tzeitel (Joan Yukum) and Motel (Kleth Pfele). Not only are the actors preparing for the ceremony but the crew is working hard on the set that will frame the event. Pat Schill came all the way from Bridgewater, Monday night, to lend a hand painting Tevye's house.

During the month of July, dancers, actors and sets will come together. The entire city must be completed and the bottle dancers must learn to balance those bottles on their heads while dancing the zesty Russian steps.

Next week, tickets for the production go on sale. Buy them in person at Chelsea Drug or mail (Continued on page six)



CHELSEA AND THE UNIVERSITY was the topic discussed at Monday night's Kiwanis Club meeting by guest Ted Bonus, a Chelsea resident who handles on-campus public relations at the University of Michigan. He told his audience about the many schools incorporated in the University and about how they effect Chelsea. His informative talk included statistics about the number of Chelsea youngsters who will be studying in Ann Arbor this fall. After his presentation, he chats here with Kiwanians Weldon Harbaugh, left) and V. O. Johnson, right.

## Fireworks, Ice Cream Social Set for Fourth

The 4th of July just isn't the 4th without fireworks. The Kiwanis Club and the Herbert J. McKune Legion Post No. 31 agree. Under their co-sponsorship, the sky will be ablaze with color when it gets dark Wednesday, to highlight the historical day's festivities.

The display will cap an evening at the Fairgrounds where an ice cream social will take place between 5 and 9 p.m. Sloppy joes, baked beans, cole slaw, cakes and ice cream will be served at the Fairgrounds Service Center Building by the Legion Post The American Legion Auxiliary will assist, adding the feminine touch to the family affair.

Elton Guenther will be supervising the fireworks display as he has for many years.

## Swim Program Free to All Area Children

There's no excuse for any Chelsea youngster to be bored these summer afternoons. Not when Chelsea Area Recreation Council sends a bus load to Half Moon Lake every afternoon for supervised recreational swimming.

This daily swim period from 12:30 to 2:30 p.m. is open to all Chelsea children. They do not have to be enrolled in any of the many other summer Recreation Council programs. They don't even have to register for this program.

All that is necessary is that youngster be ready at 12:30 p.m. at one of the three bus stops: the high school oval, the site of the old junior high, or at Lane-wood, in order to catch the bus. A 35-cent fee is required to cover the cost of transportation. The busses will return the children to (Continued on page six)

Early Copy, Please!  
Because of the fourth of July holiday, all Chelsea Standard deadlines are being moved up a day this week. Display ads must be in by Saturday and want ads must be in by Monday at 1 p.m. News items should be submitted as soon as possible.



PEANUT POWER: These Peanut League bowlers rolled their way to a State Championship at Timber Lanes in Lansing, Sunday. Having won the regionals at Adrian, they were one of six teams

## Peanut League Bowlers Win State Championship in Lansing

For the third time in three years, Chelsea bowlers have traveled to state bowling tournaments and come home winners. It was junior bowlers that brought home the honors before. This year the Peanut League came of age.

Eight-nin-and 10-year-olds John Rowe, Dan Alber, Mark Steinaway, Tim GreenLeaf and Billy Freeman took the regional title at Adrian before venturing to Lansing last week-end for the big roll-off. They came home state champs.

With their handicap, the winning total of pins for the five fellows was 3,004. An actual 1,078 pins were downed in three games.

Dan Alber led his teammates with an actual score of 428 but according to Art Steinaway, who attended the tournament to watch his youngest bowl, it was the team work that counted.

"It was great to see how everyone of those boys was just as happy or sad when one of his teammates was up. They weren't out there just for themselves," he says.

The boys, who play only two games at a time during the local competitions, were visibly weary as their third game came to a close. They use eight, 10-pins and 12-pound balls.

## Examination Continues in District Court

The preliminary examination for Diane and Patricia Stoffer held in Chelsea, June 20, will be continued today, June 28, in 14th District Court. Five witnesses were heard during the first session.

The day-long examination was devoted to the introduction of evidence. A chemist from the Federal Narcotics Laboratory in Chicago, a federal narcotics agent and three chemists from the state police laboratory identified drugs Diane sold to an undercover agent and reported the results of their laboratory studies on those drugs.

She is charged with selling 15,000 capsules of LSD to an undercover agent.

Judge Henry Arkison has reduced Diane's bond from \$10,000 on each of the six charges of delivery of LSD to \$7,500 on each count. The bond was posted and Diane was released from Livingston County Jail where she had been confined since her arrest June 5.

She had filed a suit a week earlier, suing for an order of superintending control which would require Judge Robert V. Fink to reduce the total bond to a "reasonable amount."

Patricia, who is charged with aiding and abetting the delivery of LSD, posted \$1,000 bond, June 11, when she was arraigned.

Diane, 22, and 24-year-old Gregory Steven Small who had been living at the former Goodwin family farm at 11380 Roopeke Rd., are suspected of having supplied a large quantity of LSD to users (Continued on page six)

## Bike Licensing, Safety Check Slated

As cycling becomes more and more popular, the Chelsea Jaycees are becoming more and more aware of the importance of bicycle safety.

They hope to pass on their awareness to young and old cyclists alike this Saturday by sponsoring a bicycle licensing and safety check.

The clinic, which will be held at Beach Middle school parking lot between 9 a.m. and noon, should be attended by all bicycle owners who have not yet licensed their bikes this year. Police report that registration is way behind so far.

Even those who have licensed their vehicles should come in order to have their bikes checked. The Jaycees will give the bikes a check to make sure they are in safe running order. They will make minor repairs, such as tightening chains and oiling dry gears, when needed.

Luminous triangles which are to be attached to the fenders of bicycles to warn approaching motorists of the slowing moving vehicle, will be available at the clinic for 50 cents. Jaycees will also be selling brightly colored bike flags. These flags make motorists more aware of cyclist, and thus prevent accidents.

The Jaycees who have supervised licensing days before, let the activity go by the board a year ago. Chelsea Police Chief George Meramuck asked that they resume the event this year because of the slow registration.

## Mower Shop Will Move to New Home

Chelsea Hardware's parts department and repair facilities for power equipment are being transferred to the building at 120 S. Main St. as a result of the fire that did extensive damage to the old repair shed behind the hardware store.

According to hardware store owner Tom Bust, it will take two or three weeks to convert the former Pots & Pans cratts shop to their purposes. In the rented store, Bust will establish his parts department, repair shop and show room.

The fire, which began shortly after closing May 23, left the old work shed unusable while doing considerable damage to the chain saws, tractors, tillers, and parts stored there.



TRIANGLES FOR SAFETY: Chelsea Jaycees will be sponsoring a bicycle licensing and safety check clinic at Beach Middle school parking lot this Saturday, from 9 a.m. to noon. While at the clinic, cyclists may purchase bright bike flags and fluorescent fender signs to make their bikes safer, night and day. Here Police Chief George Meramuck, who urged the Jaycees to resume the bicycle safety program this year, displays the flags and sign.

# Lack Law from Lima Says

When the state's highest court ruled in a landmark case last week, it was a blow to the state's economic future. It was a blow to the state's economic future. It was a blow to the state's economic future.

The state's highest court ruled in a landmark case last week, it was a blow to the state's economic future. It was a blow to the state's economic future. It was a blow to the state's economic future.

## Secy. of State Branch Office Closing Today

As of today, the Chelsea branch of the Michigan Secretary of State office is no longer in existence. All small branch offices will be phased out during the next five years.

Walter Wood, who has been branch manager at the Chelsea office for approximately 17 years, says the office closing will not affect his State Farm insurance business which will remain at the 100 S. Main St. address. It will merely give him more time to be a good neighbor.

**Howell Livestock Auction**  
Starts 1 p.m. Every Monday  
Phone 677-8941

**Market Report for June 25**  
CATTLE—  
Good to Choice Steers, \$16 to \$17.50  
Good Choice Heifers, \$14 to \$15.40  
Fair to Good Steers, \$10 to \$12.50  
Cows, \$8 and down.

**BULLS**—  
Heavy Holsteins, \$10 to \$12  
Light & Common, \$8 and down.

**CALVES**—  
Prime, \$18 to \$22  
Good-Choice, \$12 to \$17  
Heavy Weaners, \$8 to \$10  
Calf & Heifer, \$5 to \$8

**FEEDERS**—  
300-500 lb. Good to Choice Heifers, \$12 to \$14  
400-700 lb. Good to Choice Steers, \$14 to \$16  
500 to 600 lb. Holstein Steers, \$18 to \$20  
500-600 lb. Holstein Steers, \$12 to \$14  
Common-Med., \$10 and down.

**SHEEP**—  
Shorn Slaughter Lambs:  
Old Crop, Choice-Prime, \$35 to \$37.50  
Good-Utility, \$32 to \$35  
Wooled Slaughter Lambs:  
Choice-Prime, \$38 to \$40  
Good-Utility, \$35 to \$38  
Slaughter Ewes, \$9 to \$10  
Foster Lambs, all weights, \$9 to \$14

**HOGS**—  
200-250 lb. No. 1, \$40.50 to \$41.50  
200-240 lb. No. 2, \$39.50 to \$40.50  
240 lb. and up, \$38 to \$39.50  
Light Hogs, \$39 and down.

**SOYS**—  
Plant Light, \$33 to \$34  
300-500 lb. \$32.50 to \$33  
500 lb. and up, \$32 to \$32.50

**BOARS AND STEGS**—  
All Weights, \$32 to \$35  
**FEEDER PIGS**—  
Far Head, \$15 to \$25  
**HAY**—  
1st Cutting, 50c to 55c  
2nd Cutting, 55c to 60c  
**STRAW**—  
Per Bale, 40c to 50c  
**COWS**—  
Tested Dairy Cows, \$400 to \$550  
Tested Beef Type Cows, \$300 to \$400

## Vacation Bible School Slated at Lutheran Church

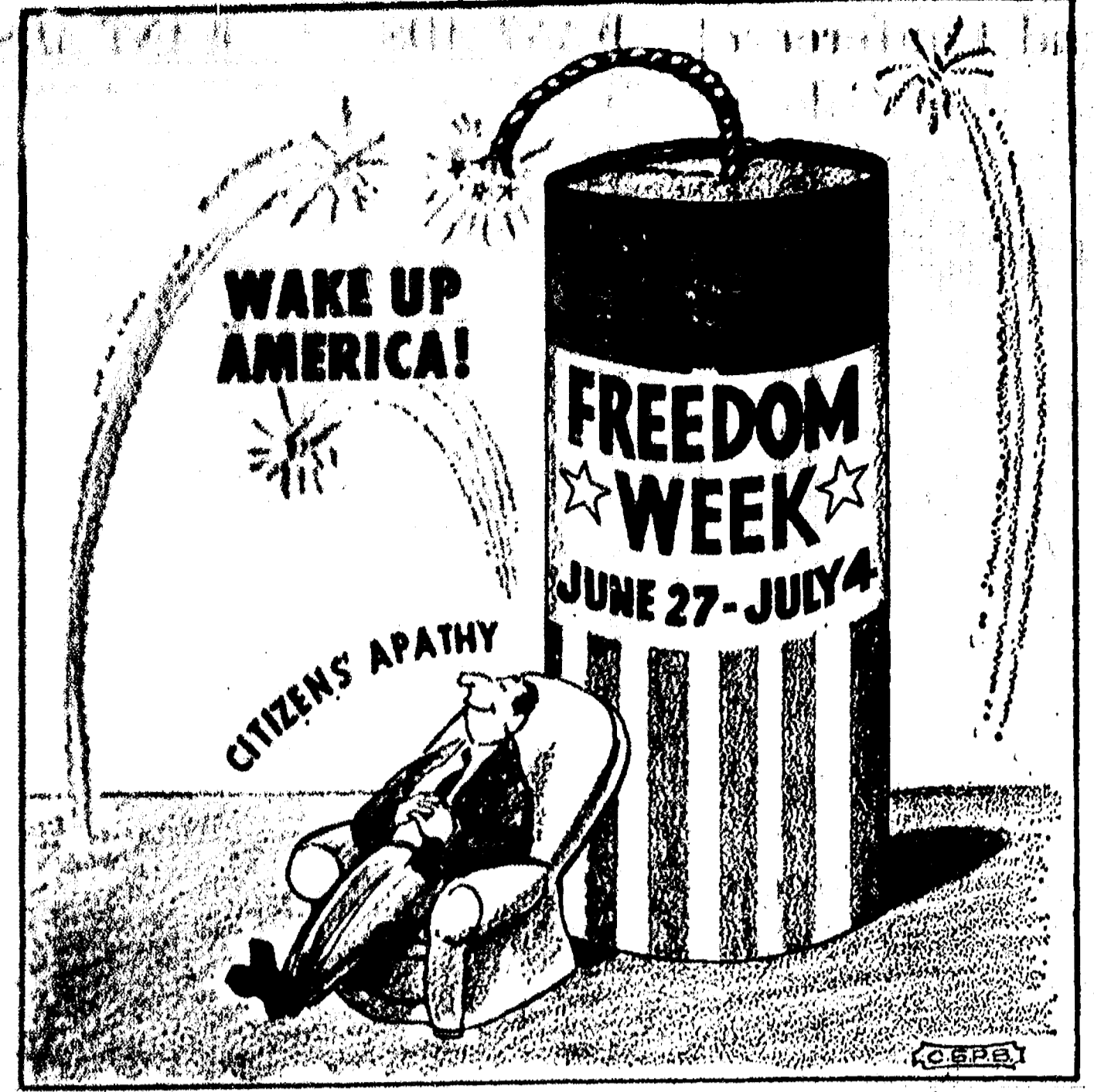
Vacation Bible School will begin at Our Savior Lutheran church, 1515 S. Main St., in Chelsea, on Monday, July 16, and continue until Friday, July 27. Classes will be held each weekday morning from 9 a.m. until 11:30 a.m.

"Tell the News—Share Love" is the central theme of this year's school which will emphasize the ability of children to share their faith with other people. The daily sessions will include Bible study, music, crafts, recreation and refreshments.

All children four years old up to those entering the 6th grade in the fall are welcome to attend. Parents may enroll their children now by telephone at 475-1404 or 475-7649.

## CRAFT PAINTING

FREE ESTIMATES  
REASONABLE RATES  
**662-2952**  
"We take pride in our work."



## MICHIGAN MIRROR

By Elmer E. White, Secretary, Michigan Press Association

### Flouride Accepted

The question of whether to add flouride to a community's drinking water, a medical and social issue thrust some years ago into the political arena, may be decided for every Michigan governmental unit with a water supply by July 19.

That's the deadline for every county, city, township or village in the state to either reject flouride or add it to its drinking supply under a law passed by the legislature in 1968. All units which haven't specifically rejected it by then are required to add it.

### Plate Deadline

Another deadline, less serious in nature, comes this Saturday (June 30).

That's the last day Michigan residents can reserve a personalized license plate for themselves for 1974.

The license, called "vanity plates," are available at a charge of \$25 above what the car owner normally pays for his license plates. That money goes to the highway department to be used for highway clean up.

### Gas Tax Petition Names Checked With Voting Lists

Lansing—The Michigan Department of State has enlisted the aid of its giant computer to determine accuracy of gas tax petition signatures filed with the state to see whether the controversial issue should be put to a vote of the people.

According to Secretary of State Richard H. Austin, a computer program to measure a random sampling of the 176,483 signatures filed with the Department of State has been written. A total of 300 petitions were selected to be checked against local elections records.

The preliminary check of the signatures revealed that 186,681 appeared to be valid, based on the face of the petition. To determine the percentage of registered voters included among these signatures, the Board of State Canvassers ordered a random check against the files of local clerks, ballot in the Fall of 1974, a total of 132,890 valid signatures are necessary.

### Illness Aid

One of the tragic situations which exists is the seriously ill person who cannot afford to pay for medical treatment needed to make him well.

Two members of the legislature are making an attempt to provide help so that persons living in the richest country in the world need not die because they can't afford doctor and treatment bills.

### Rep. Joyce Symons, D-Allen Park, and Sen. Robert Vander Laan, R-Grand Rapids, have introduced bills to create a special \$500,000 fund for persons with catastrophic illnesses or injuries.

It provides payment for 100 percent of the medical expenses in excess of 15 percent of a family's gross income.

Thus, if a family of four had an income of \$10,000 per year and an illness raised its medical bills above the \$1,500 level, the state would pay the bills. Since some illnesses require elaborate and expensive treatment which may be as high as a total income, for those persons the bill could literally be a life saver.

### Subscribe today to The Standard!

## JUST REMINISCING

Items Taken from the Files of The Chelsea Standard

### 4 Years Ago...

Thursday, June 24, 1969—  
A new \$20,000 pay loader was purchased by the Village this month to replace the old gasoline engine Hough Pay Loader Model H-50 at the Chelsea Sanitary Landfill. The new Hough Pay Loader Model H-50 with diesel engine, has nearly twice the power and capacity as the old machine.

With this issue, the Chelsea Standard enters its 100th year of publication. For 99 years, 52 times a year, someone has regularly looked up the forms in whose metal type the activities of Chelsea were recorded and started the weekly press.

Homer Nixon retires as head of the Chelsea Light & Water Department early next week. He will be missed. For one thing, the quiet, efficient and genial gentleman has gathered an intimate knowledge of the functioning of the department in the 29 years since he was first employed by the Village of Chelsea.

After four years as band director and one year as assistant principal and athletic director at the Chelsea High school, Bruce Galbraith announced his resignation from the system to the school board at the meeting Monday night. Galbraith, who came to Chelsea in the 1964-65 school term from the Grand Rapids school district where he also served as band director, has assumed the full-time post of Executive Director of the Michigan School Band and Orchestra Association.

Twelve of the 16 surviving members of the Chelsea High school class of 1919 held a reunion here Saturday evening. They met at the home of Miss Dorothea Pielmeier for a period of visiting and reminiscing and then went to Schumm's restaurant for dinner.

Chelsea policemen turned cowboys last Wednesday night as they rounded up a band of stray Black Angus and directed at the scene of two accidents caused by the roving cattle.

### 14 Years Ago...

Thursday, June 25, 1959—  
More than 300 Chelsea area residents attended the reception honoring the Rev. P. H. Grabowski upon his retirement as pastor of St. Paul's Evangelical and Reformed church which he has served for 37 years. At the reception, the Rev. Grabowski was presented with a purse of more than \$1300 which represented a re-will contributions of church members and friends. Presentation was made by George Knickerbocker, Church Council president, who read a letter commending the pastor for his faithful service to the

congregation and extending best wishes for the future.

The Centennial Ball, which opens the special events of the 125th Anniversary week, July 11-18, will be held from 9 p.m. until 12 p.m., Saturday, July 11, in the new Chelsea High school gymnasium. The successful candidate for the title of anniversary queen will be announced during the intermission at the ball. Music will be furnished by Jonny Harbard's Orchestra.

Phillip Bareis, southpaw hurler who gained widespread acclaim while a member of the baseball team at Western Michigan University, has signed a Major League contract with a sizable bonus. Last Thursday he signed with the Washington Senator's team. He left Sunday for Lynchburg, Va. As a member of the WMU team, he played in the Florida State University, Invitational Tournament where he was one of the top lefthanders of the season, according to his coach, Charlie Maher. Bareis is the son of Mr. and Mrs. Oscar E. Bareis of Dancer Rd. His wife, the former Helen Elsemann, daughter of Mr. and Mrs. Harold Elsemann, accompanied him to Lynchburg. Present plans indicate that Bareis will return to Michigan in the fall to become athletic coach and teach part-time at Saline High school while he completes minor requirements for a degree from Western Michigan University.

### 24 Years Ago...

Thursday, June 30, 1949—  
Herman Gross was painfully injured Sunday afternoon when he fell from a load of hay while working with others on his farm on US-12. Members of his family believe he was overcome by the heat before he fell as he remembers nothing of how the accident occurred. He fell off a truck load of hay as it was being driven to the barn and was not fished by his companions until they stopped the truck to unload it. Examination disclosed that his injuries included a broken bone in his right forearm and a splintered bone in the upper arm, fractured ribs, concussion and back injuries.

Believe it or not, you don't have to have bait, hook or line to catch fish out at Crooked Lake. Just ask Vince Burg and his son, Jerome, Monday morning, about 12:30, when Jerome and his dad were catching frogs around the edge of the lake, a pike jumped into the boat, much to the surprise of the frog catchers. To top matters off, in about ten minutes, another pike jumped into the boat to join the first one. Later on, Jerome caught two frogs sitting in the crotch of a bush, three feet above the water.

### 34 Years Ago...

Thursday, June 29, 1939—  
Mr. and Mrs. Edwin N. Brown celebrated their 50th wedding anniversary, Monday, at the Methodist Home where they have been residents for nearly five years.

Again, on Sunday, July 2, the people of Salem church will appropriately observe the anniversary of the organization of the congregation. Many years have passed during which this church has become a haven of the community, now called Salem Grove. Descendants of early settlers who came to this vicinity in the early 40's from Holland, Barvaria and Alsace-Lorraine held their second annual get-together picnic, Sunday at Island Lake, near Brighton. There was a good attendance with representatives from Detroit, Ann Arbor, Bay City, Lansing, Jackson and Chelsea.

**Real Estate One.**  
WEED REALTY, INC., ASSOCIATES  
REALTORS  
**475-8693**  
1196 M-52, CHELSEA

**TEE COURSE DRIVING RANGE**  
465 S. FREER RD.  
CHELSEA, MICH.  
Take Exit 159 or 160  
**Open 7 Days - 10 to 9:30**  
PHONE: 475-2857

**COMPARE**  
STILL THE BEST SAVINGS PLANS IN TOWN!

ONE DAY	6 MONTHS	1 YEAR	2 YEAR
5% PER ANNUM	5 1/4% PER ANNUM	5 3/4% PER ANNUM	6% PER ANNUM
5.09% EFFECTIVE ANNUAL RATE	5.35% EFFECTIVE ANNUAL RATE	5.87% EFFECTIVE ANNUAL RATE	6.13% EFFECTIVE ANNUAL RATE
PASSBOOK SAVINGS NO MINIMUM	PASSBOOK CERTIFICATE \$1000 MINIMUM	PASSBOOK CERTIFICATE \$1000 MINIMUM	PASSBOOK CERTIFICATE \$5000 MINIMUM

INTEREST IS PAID AND COMPOUNDED QUARTERLY—EARLY WITHDRAWALS ARE SUBJECT TO PENALTY AS REQUIRED BY FEDERAL REGULATIONS

**ANN ARBOR FEDERAL SAVINGS**  
the savings and loan specialists

HOURS: Mon.-Thurs. 9:00 A.M. to 5:00 P.M.  
Friday 9:00 A.M. to 6:00 P.M.

Established 1871 **The Chelsea Standard** Telephone 475-1371  
Excellence Award By Michigan Press Association 1951-1952-1960-1964-1966-1968  
Walter P. Leonard, Editor and Publisher

Published every Thursday morning at 300 North Main Street, Chelsea, Mich. 48118, and second class postage paid at Chelsea, Mich., under the Act of March 3, 1879.

Subscription Rates (Payable in Advance)  
In Michigan: One Year \$4.00, Six Months \$2.25, Single Copies \$.15  
Outside Michigan: One Year \$6.00, Six Months \$3.50, Single Copies \$.20  
Service men or women, anywhere, 1 year \$4.00.

MEMBER National Advertising Representative: **NATIONAL NEWSPAPER** MICHIGAN NEWSPAPERS, INC., 287 Michigan Ave., East Lansing, Mich. 48822

### FAST CARVERS!

Eskimo whale hunters in Alaska carve so fast after they capture their prey that they can reduce an eight-ton whale to a spot in the snow in five to six hours.

### JAN KO KITCHENS

6585 Jackson Rd.  
(Maple Mirror Bldg.)  
Ann Arbor Ph. 668-6187  
Are you in need of a new kitchen? Stop in and see our displays.  
HOURS: Mon. 9-9; Tues.-Fri. 9-5; or by appointment.



FROM THE OLD TIME DUDS, says Bill Enslin, pastor of North Sharon Bible church which will be observing "Old Fashioned Day" this Sunday. Enslin, who is shown here with top hat and a doublet coat, will do some old fashioned preaching at the 11 a.m. service which will be coupled with some old time gospel singing. A pot-luck picnic will be held on the church grounds after the services.

### Sharon Bible Church Plans Another Old Fashioned Day

For the third time in three years, North Sharon Bible church will roll back the clock. Sunday will be an old fashioned day with gospel singing, a display of antique spinning wheels and the congregation dressed in "old time duds."

Mr. Hattie Beckwith, an authority on the history of this area, will arrive at church in a horse and buggy. While spinning homemade wool on an antique spinning wheel, she will relate some facts of the pioneer life in this area. Mrs. Beckwith helped found the Waterloo Farm Museum and has spoken at many universities on the subject of Waterloo's heritage.

The public is welcome to the old time Sunday school at 10 a.m. Old time gospel singing and preaching at 11 a.m. is also open to the public. Following the services, the congregation will participate in a pot-luck picnic on the church grounds.

The afternoon will be occupied with community singing while the less vocal members of the group view an antique display which includes a century-old communion set and Bible once used in the church. Games will also occupy the afternoon.

Children will enjoy releasing 350 helium filled balloons bearing their name and a gospel message. Those who find the balloons will be asked to write back to the sender.

"Don't ye old time duds for this third annual event," says Pastor Bill Enslin. Bus transportation from the Chelsea area is available by calling the church at 428-7222.

### Chosen To Attend Conference On Forest, Paper Technology

David Klemer of International Science Fair fame has been asked to attend a week-long program at Western Michigan University June 24-29. The program, sponsored by the Paper Technology Foundation, will consider "The Role of Chemistry and Engineering in Forest Resources, Pulp, Paper and the Environment."



DAVID KLEMER

Open only to high school seniors in the entire state, the program is designed to encourage these students who have shown great ability in math and sciences to consider college training and careers in related fields.

Planners call it "an intensive learning experience," which counsels the youngsters on college courses while offering them lectures, laboratory experiences and field trips designed to open their eyes to career opportunities in science and engineering.

University faculty members, students and representatives from the business world will attend the conference to advise and encourage the high schoolers.

All students attending are science oriented and plan to pursue scientific careers. They have B-averages or better in their three years at high school and are recommended by their schools.

During the week, the group will visit Simpson-Lee Paper Co. in Vicksburg and Scott Paper Co. An Analog and Digital Computer Workshop will be another highlight of the week as will stops at the Kalamazoo Water Treatment Plant and the Air Water Pollution Laboratory.

David, the son of Mr. and Mrs. Earl Klemer, has just returned from Wolverine Boys State, Wednesday, and was off again Sunday. All but the cost of transportation to Kalamazoo is paid by the sponsors.

Polis which will be open tomorrow from 6 a.m. until 6 p.m. for the run-off, will be located at the Union Hall, 218 S. Main St.

### Run-Off Election Will Determine Local 437 Head

A run-off election will be held tomorrow, Friday, June 29, to determine the president of UAW Amalgamated Local NO. 437.

Last Friday's election eliminated Ishmael Picklesimer from the fray but left Harold Salyer and Harvey Morrell in contention.

Earnest G. Push ran uncontested and won the vice-presidency. Similarly L. N. Farley became financial secretary without competition. Ott Risner is the new recording secretary.

Newly-elected trustees are Duane (Buck) Gullett, Doug Craft and Jess Mays. The sergeant-at-arms is James Trapp.

Polis which will be open tomorrow from 6 a.m. until 6 p.m. for the run-off, will be located at the Union Hall, 218 S. Main St.

### Baton Cancelled

The Chelsea Area Recreation Council has cancelled its plans to offer a baton class as part of the summer program curriculum.

### WANT ADS

OFFICE SPACE for rent in the Real Estate One building on Main St. Excellent location for your business. Call Ed Coy at 475-5833. 1lf

WANTED—Occasional babysitter needed for young couple. One child. Responsible 14-16-year-old girl preferred. Please call 475-1471. 1

YOUNG COUPLE seeks to rent or rent with option to buy 2-or-3 bedroom house in Chelsea area. Call collect (517) 783-3352. x2

LADY WANTED to stay with an elderly lady. Room, board and pay. Please write Mrs. Alvin Gragg, RR2, Chelsea, or phone Gragg Lake (517) 522-8551. 2

FOR SALE—14 cu. ft. Frigidaire refrigerator, 50-lb. freezing unit, \$25. Call 475-2087. 2

TO BE GIVEN AWAY—White enamel kitchen sink and matching cabinets; also overstuffed chair. Call Chelsea Social Service Tuesday or Thursday between 2 and 5 p.m. Phone 475-1581. 3

MOVING—Porch sale Friday and Saturday, 9 to 6. Office equipment, furniture, dishes, clothes, misc. 128 E. Summit. 2

WANTED—Man or boy with 4-row cultivator and tractor, to cultivate 80 acres of soy beans. Call 475-1761. 2

24-FT. ALUMINUM pontoon boat, 65 h.p. motor; also trailer; new last year. Cost over \$4,200. Sell \$3,000 or best offer. Ph. 475-1839. 3

FOR SALE—Used Magnavox stereo phonograph with AM-FM radio. Good condition. \$60. Ph. 475-7201. 2

WANTED TO RENT—Home large enough for parents, three children and tiny dog. Chelsea schools. Ph. 475-1538. 2

WANTED—Small furnished apartment for a single person in town; prefer utilities included. Call (517) 596-2219. 2

FOR SALE—St. Bernard puppies ready to go in two weeks. AKC champion bloodline. Ph. 475-1062. 5

HOUSE FOR SALE by owner. Excellent condition, Half Moon lake, Chelsea schools, 3-bedroom, beautifully carpeted and paneled. Aluminum siding and trim, 2 1/2-car attached garage, large lot, and lake access. \$35,500. Call 475-8224. 2

### WANT ADS

COMPLETE LINE swimming pool chemicals at Gambles, 110 N. Main. Phone 475-7472. 2

COMPLETE LINE swimming pool chemicals at Gambles, 110 N. Main. Phone 475-7472. 2

FOR SALE—Boy's bicycle, 20" Huffy 3-speed with saddle seat, wheels, bar, speedometer, and chrome fenders. Very good condition. Call 475-8595. 2

GARAGE SALE—Thursday, Friday, Saturday, 9 a.m. till dark. Dishes, utensils, lamps, clocks, 4-drawer oak chest with brass handles, jewelry, 2 new camp cots. Many other items. Come and look. Ted Balmer, 425 Chandler St. 2

FOR SALE—1972 500 c.c. Suzuki 700. Call 475-2898. 8

FOR SALE—1972 750 c.c. Honda, excellent condition, \$1,475. Call 475-2898. 8

APARTMENT FOR RENT—1-bedroom apartment, carpeted, and furnished. Ph. 603-8958. 2

WANTED—Morning Free Press delivery carrier within the village. Must be at least 12 years old. Ph. 475-7878. 2lf

THANK YOU—We wish to thank all of our relatives, friends and neighbors for their many kind expressions of sympathy, cards, floral offerings, food, and help during our bereavement in the loss of our beloved husband and father. We especially thank the Rev. Carl W. Schwarm for his comforting words the nurses, aides and doctors of Chelsea Community Hospital for their wonderful care, and the Burghardt Funeral Home.

Mrs. Elton K. Musbach. Mr. and Mrs. Kenneth Musbach. Mr. and Mrs. Arden Musbach.

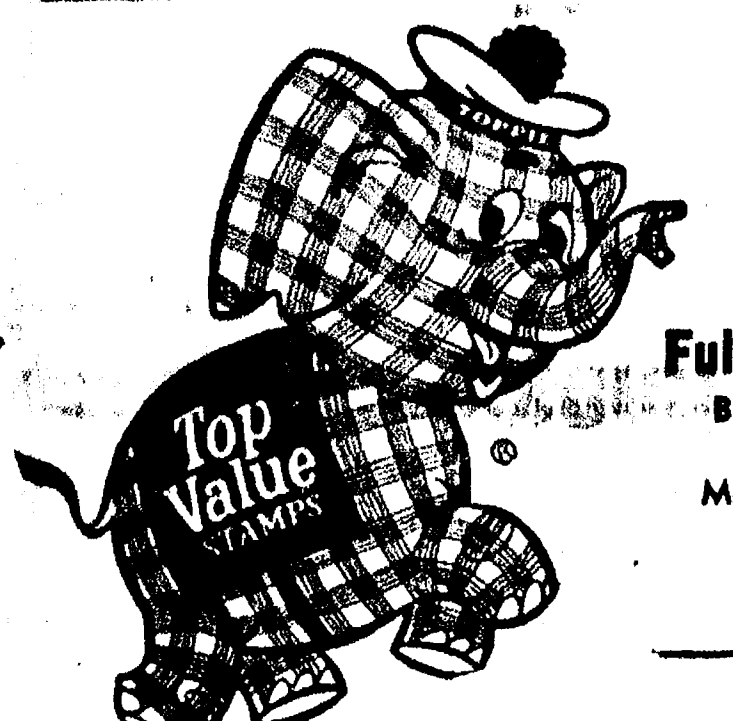
THANK YOU—We would like to thank our friends and relatives for helping to make our 25th wedding anniversary open house a happy occasion. A special thanks to all our children. Jim and Shirley Gaken.

Besides making verbal communication nearly impossible, loud industrial noises can pose a safety problem, warn hearing specialists. High intensity noise levels not only are hazardous to the human hearing mechanism, but also could cause a worker not to hear a warning shout.

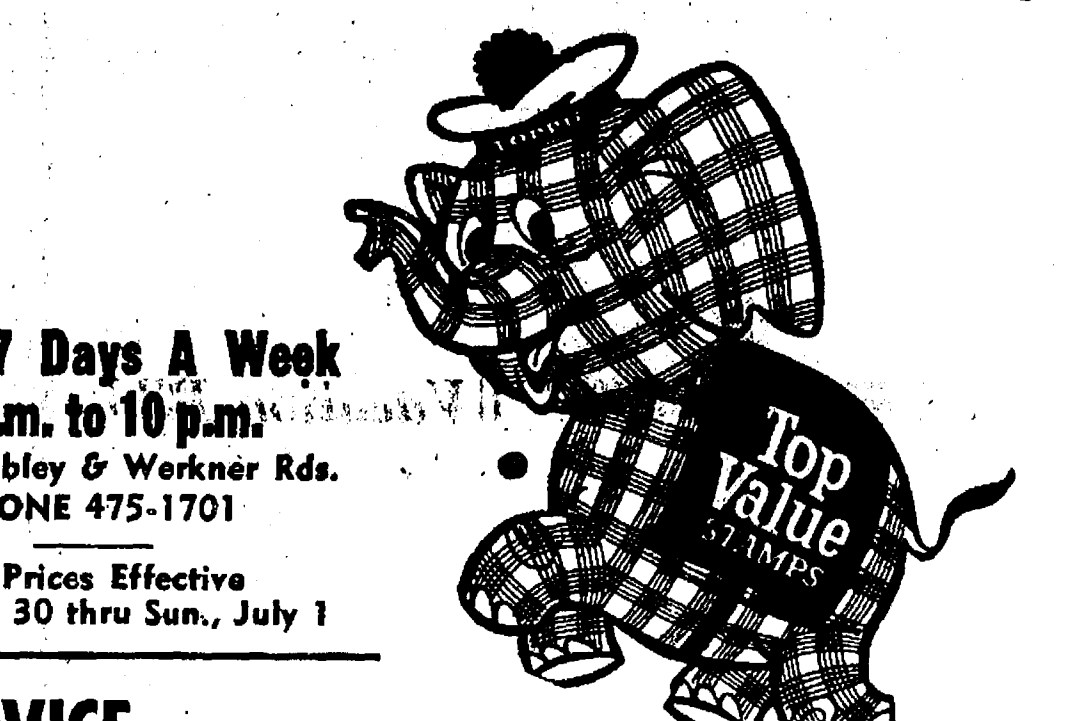
**EXPERT**  
**BUMPING and PAINTING**  
FREE ESTIMATES - ALL MAKES  
**LLOYD BRIDGES CHEVROLET**  
OPEN SATURDAY MORNING, 8 a.m. to 12 noon  
475-1373  
CHELSEA, MICH.

**INTERIOR EXTERIOR**  
**QUALITY PAINTING**  
For Free Estimate Call Collect  
**BRUCE MacINNIS**  
BRIGHTON 227-7057

**DINING ROOM OPEN**  
DELICIOUS FRIED CHICKEN, SHRIMP and OCEAN PERCH DINNERS  
CHICKEN BY THE BUCKET  
GURB SERVICE and CARRY-OUT SERVICE  
Six Days a Week, 10 a.m. to 10 p.m. Closed Mondays.  
ROOT BEER BY THE GALLON  
Also: Sandwich & Fountain Menu  
**L & R DRIVE-IN**  
11485 NORTH TERRITORIAL RD. PHONE 426-8668



**TOP VALUE STAMPS**  
WHEN YOU SHOP AT THE  
**Jiffy market**  
Big Enough To Serve You . . . Small Enough To Know You!  
Open 7 Days A Week  
7 a.m. to 10 p.m.  
Corner Sibley & Werkner Rds.  
PHONE 475-1701  
Sale Prices Effective  
Thurs., June 30 thru Sun., July 1



**JIFFY MARKET MEAT DEPT.**  
U.S.D.A. CHOICE BEEF  
YOUNG, LEAN, TENDER  
**WHOLE PORK LOIN**  
12 to 14 Lb. Average Per Lb. **85¢**  
1/4 LOIN . lb. **85¢**  
CENTER Rib Chops . lb. **\$1.29**  
MEADOWDALE SLICED BACON . . lb. **89¢**  
HERRUD CHUNK BOLOGNA, lb. **69¢**  
FARMER PEET'S ALL-BEEF FRANKS . . lb. **98¢**  
END CUT CHOPS . . lb. **79¢**  
LOIN CUT CHOPS . . lb. **\$1.39**  
HERRUD CHUNK LIVER SAUSAGE Braunschweiger . . lb. **59¢**  
HOME-MADE GARLIC OR REG. Pork Sausage lb. **89¢**  
FARMER PEET'S RING BOLOGNA, lb. **89¢**

**JIFFY MARKET SPECIAL!**  
**CIGARETTES**  
All Brands and Sizes  
**\$3.39** carton  
**FREE!**  
New Top Value Family Gift Catalog available at our store NOW!

**JIFFY MARKET GROCERIES-FRESH PRODUCE-FROZEN FOODS**  
WONDER BREAD CO. COUNTY FAIR  
BREAD . . . . . **.5** Family Size 1 1/4-Lb. Loaves **\$1**  
RISDON'S LOW-FAT MILK . . . . . **85¢** Gal.  
FAMILY SIZE IN DECORATIVE, REUSEABLE SALAD OR CEREAL BOWL  
SOFT BLUE BONNET MARGARINE . . . . . **39¢** 1-Lb. Bowl  
28-OZ. (11-LB., 12-OZ.) CAN CAMPBELL'S PORK & BEANS . . . . . **.29¢**  
1-LB. PKG. CAMELOT ELBOW MACARONI . . . . . **19¢**  
6 1/2-OZ. CAN STAR KIST TUNA, Chunk Style . . . . . **37¢**  
1-LB., 4-OZ. BOTTLE HEINZ TOMATO KETCHUP . . . . . **39¢**  
300-CT. BOX 2-PLY CAMELOT FACIAL TISSUES . . . . . **15¢**  
LARGE ASSORTMENT 12-OZ. CANS REG. OR DIET FAYGO CAN POP . . . . . **10¢**  
LARGE 27 SIZE CALIFORNIA CANTALOUPE . . . . . **49¢**  
FRESH, SOLID HEADS GREEN CABBAGE . . . . . **10¢** Lb.

FARMER PEET'S **HI-STILE HAM**  
De-Fatted - Semi-Boneless  
Whole **98¢**  
HALF - \$1.08 lb.

**FREE!**  
**100 TOP VALUE STAMPS**  
WITH THIS COUPON  
GOOD ONLY JUNE 30 - JULY 1, 1973.  
**JIFFY MARKET**  
CHELSEA, MICH.

**JIFFY MARKET'S DOUBLE TREAT FROM BORDENS COMPANY**  
Box of 24 Assorted  
**POP & FUDGES or GLACIER POPS**  
A Family Treat Only **79¢**



WANT ADS

Automotive Road Proofing Cars and Trucks Village... Village Motor Sales, Inc. 8111 W. Main St., Chelsea, Mich. 48119

WANTED People interested in... 475-8863 DALE COOK

HOUSE FOR SALE in Stockbridge... 475-8863 DALE COOK

CALL NOW SAVE \$\$\$ Greenwood for Siding - Remodeling... 475-8400

Fourth of July Sales The top's raising up at Hilltop with a bang in a fantastic 4th of July sale... Hilltop Plumbing & Bath Shop

DEPENDABLE TREE SERVICE Cutting and removing... 475-1062

Real Estate One. WEED REALTY, INC., ASSOCIATES REALTORS

ANN ARBOR 761-8912 1900 S. MAIN CHELSEA 1196 M-52 475-8693 LAKE LOTS... 10 ACRES... LAKE HOME... SMALL FARM...

WANT ADS

LEHMAN WAHL Land Appraisal Residential and Farm... 426-2888

HILLTOP, INC. 8111 W. Main St., Chelsea, Mich. 475-2949

REPAIR SERVICE for household refrigerators, freezers and garbage disposers... 475-8400

New and Remodeling Residential Carpenter Contractor M. A. LAWRENCE Ph. 475-1106

Headquarters for RED WING WORK SHOES Foster's Men's Wear... 475-8400

FOR SALE—1972 Corsair 24-ft. travel trailer... 475-1174

Mrs. E. Fisher Proprietor Ted and Milford, Sr., Auctioneers Phone 482-7860. This sale contains everything from soup to nuts.

WANT ADS

NOW Full Time Complete Body Shop Service... PALMER FORD 828 S. Main St., Chelsea, Mich. 475-1391

FOR RENT—Party Service Center for meetings, parties, wedding receptions... 475-1311

Fireplace Builder Field stone mason, block and brick mason, work pointing... 475-8025

CUSTOM BUILDING LICENSED & INSURED FREE ESTIMATES TOTAL CONSTRUCTION SERVICES

ROBERT A. ALDER licensed contractor. Residential building, remodeling... 408-2323

FARM AUCTION Saturday, June 30 11 sharp, at 8250 Master Rd., Chelsea, Michigan

Take M-52 north two miles to Waterloo Rd., turn right one-fourth mile to Meester, left one mile to end of the road.

Madeline Tarr, Realtor ACCREDITED FARM AND LAND BROKER MOVING UP? Moving out? Then here it is! Ten acres plus a lovely, spacious bi-level home...

WANT ADS

Game Travel Trailers and Campers PICK UP COVERS... Triangle Sales Chelsea 475-4808

VACUUM CLEANERS—Electrolux, authorized sales and service... 426-8821

Complete Body Repair Service Bumping - Painting Windshield and Side Glass Replacement... 475-8025

Village Motor Sales, Inc. IMPERIAL - CHRYSLER DODGE - PLYMOUTH Phone 475-9661

MINI-BIKES—Special, \$99.95, \$119.95, \$129.95 and up. Full line of Ruppel including the 80 cc's and 100 cc's.

Siding, Roofing and Gutters Reasonably priced and licensed. Mills Construction Co. Call 851-8657 for free estimates.

MODERNIZE YOUR HOME Remodeling inside and out. AWNINGS - PATIOS Basements, under existing homes or new.

Ken McDonough 770 Oak Hill Dr., Brooklyn, Mich. 49228 AUTO PARTS JOBBING STORE for sale.

ONE UPRIGHT player piano for sale. Good condition. Now Keys. \$180. Redwood two-seat lounge with cushions. \$20. 475-1738.

WANT ADS

SECURITY GUARDS Chelsea, Manchester Whitmore Lake area Phone 761-5315

ALCOA ALUMINUM SIDING specialist. Michigan since 1938. All exterior wood covered... 683-8835

ASPHALT PAVING Driveways - Parking Areas Landscaping - Site Work... 851-8803 or (313) 483-1027

ALLSTATE INSURANCE AUTO - BOAT - COMMERCIAL LIFE - HEALTH - HOME Phone Eves. or Week-ends for N. H. MILES, Agent GR 5-8334

USED CARS and TRUCKS BOUGHT and SOLD KETO, INC. 8080 Grand DEXTER Phone 428-4585

Chelsea Associated Builders Custom Building and Remodeling. Over 20 years experience. Call 475-8182.

KNAPP SHOES For Cushion Comfort Robert Robbins 475-7282

HOUSEWORKS—Attractive, part-time work. Close to home. \$30.45 for two evenings per week. Must have use of car and phone.

FOR SALE 39 ACRES, water and gas to property. 600 feet from Village of Chelsea. 670 feet road frontage. Now reduced below \$900 an acre.

WANT ADS

SECURITY GUARDS Chelsea, Manchester Whitmore Lake area Phone 761-5315

ALCOA ALUMINUM SIDING specialist. Michigan since 1938. All exterior wood covered... 683-8835

ASPHALT PAVING Driveways - Parking Areas Landscaping - Site Work... 851-8803 or (313) 483-1027

ALLSTATE INSURANCE AUTO - BOAT - COMMERCIAL LIFE - HEALTH - HOME Phone Eves. or Week-ends for N. H. MILES, Agent GR 5-8334

USED CARS and TRUCKS BOUGHT and SOLD KETO, INC. 8080 Grand DEXTER Phone 428-4585

Chelsea Associated Builders Custom Building and Remodeling. Over 20 years experience. Call 475-8182.

KNAPP SHOES For Cushion Comfort Robert Robbins 475-7282

HOUSEWORKS—Attractive, part-time work. Close to home. \$30.45 for two evenings per week. Must have use of car and phone.

FOR SALE 39 ACRES, water and gas to property. 600 feet from Village of Chelsea. 670 feet road frontage. Now reduced below \$900 an acre.

WANT ADS

HURON RIVER chain of lakes. Duxter schools. Wooded building site. 150 ft. water frontage by 400 ft. Two roads. \$18,000 with \$3,000 down. Ph. 428-8377. Orin Ferguson, broker.

SEW'S STRETCH MATERIAL—1978 Dial and Stitch, \$46.50. Left in layaway. Sew stretch material. Comes with a walnut sew table. Beautiful pastel color. Full size head. All built-in to zig-zag, buttonholes, overcasts, makes fancy stitches and winds the bobbin automatically. Only \$40.50 cash or terms arranged. Trade-ins accepted. Call Ypsilanti collect 482-8822, 9 a.m. to 9 p.m. Electro Grand, 21973 Dial and Stitch.

MILLIONS of rugs have been cleaned with Blue Lustre. It's America's finest. Rent electric shampooer, \$1. Danger's, 2 Orchard St., Sat., 10 to 2. Sewing machine, saddle, portable washer and dryer, crates; chairs; clothes, and misc. items. 2

DRY CLEANING carpets is easier, faster, and safer with HOST er, faster, and safer with HOST Rent our machine. Merkel Home Furnishings.

FOR SALE—Special price, Auromycin Crumbles, 60-lb. bag, \$6.75. Sheep warmer salt, 50-lb bag, \$6.75. Cole's Elevator Co., Inc., Gregory.

TUTOR—Reading and math; certified teacher, Mrs. S. Peterson. Ph. 475-2718.

FOR SALE—Clarinet, case and stand. All in good condition. Call 475-8093.

FOR SALE—1967 Buick Wildcat. Excellent second car. Phone 426-3202 or 475-2069.

1966 OLDSMOBILE Jet Star 88. Power steering, power brakes, 390 cc., perfect mechanical condition, body fair, \$300. Call 475-2315.

1975 HARLEY-DAVIDSON 350 cc. Sprint. Enduro model, showroom condition. 600 miles. \$800. Call 475-2315.

FOR SALE—German Shepherd, 10 months, spayed, gentle, \$85. Ph. 428-8096.

GARAGE SALE—Friday and Saturday, June 29 & 30, starting at 9 a.m. 160 E. Summit, Chelsea. Appliances, furniture. Lots of junk and stuff. x2

WORKING MOTHER wishes to rent apartment in town for herself and daughter. Please call 475-1806 after p.m.

WANT ADS

PICK-UP CAMPER TOPS \$89.95. \$149.95, \$169.95. Slant-side, cab-high, all colors. Also, 30-in. and 36-in. tops. Also, insulated paneled with screens. Save 450. Coffman's Sports Center, 1011 Lansing Ave., Jackson, Mich. Open 9-9, Sundays 12-6. x48tf

ROCKING M RANCH—Stud service, Arabian bay, \$75 grade; stock (Morgans, Arabas and part-Arabs) for sale. Call 426-8110 or visit 8080 N. Territorial, Dexter. - x4

FOR SALE—14' Glaspar boat and cover; 40 h.p. motor and trailer. 475-7493. -x2

LOST—Female Brittany spaniel, Dexter-Chelsea Rd. area. Please call 475-8893.

FOR SALE—1972 Corsair 24-ft. travel trailer. Used 1 week. Call 475-1174 after 5 p.m. -x2

FOR SALE—72 Ford Gran Torino 2-door hardtop, power steering, power brakes, AM radio, vinyl top. For further information, call 475-2897 or may be seen at 16810 Waterloo Rd. -x2

WANTED—Listeners for Christ for Everyone, Monday through Friday, 6:30 p.m. WBFG-FM Radio. Jesus Saves. -x2

WANTED—Volkswagen, every-thing except engine, 4-speed transmission, '66 and up. Call 475-2110. -x2

FOR SALE—1971 Plymouth Duster, 340 cc., 4-speed, power steering. Must sell, \$1,595. Call 475-1254. -x2

FOR SALE—3-bedroom ranch, 2 full baths, 1,800 sq. ft. living area. 2 1/2-car garage, on one acre. Chelsea School District. Ph. 475-8854. -x2

FOR SALE—1971 Plymouth Duster, 340 cc., 4-speed, power steering. Must sell, \$1,595. Call 475-1254. -x2

GARAGE SALE—Friday and Saturday, June 29 & 30, starting at 9 a.m. 160 E. Summit, Chelsea. Appliances, furniture. Lots of junk and stuff. x2

FOR SALE—1966 Dodge Polara 4-dr. sedan. Excellent transportation, \$200. Ph. 475-8108. -x2

TODAY'S THOUGHT By LOUIS BURGHARDT You can call it the 4th of July—or Independence Day. The name is unimportant. How we feel about it and what we do about it are far more important.

SPECIALS ECKRICH ALL-MEAT Hot Dogs... 1-lb. pkg. 83c PKG. OF 8 HOLSUM HAMBURGER OR Hot Dog Buns... 2 pkgs. 65c Paper Plates... 49c 10-OZ. NO-RETURN BOTTLES Pepsi-Cola... 8 pac 85c PKG. OF 12 SAP'S Glazed Donuts... 33c KUSTERER'S FOOD MARKET DIAL 475-2721 WE DELIVER

The MONEY IS HERE for your AUTO LOAN See us before you arrange for Auto Financing. CHELSEA STATE BANK Member Federal Reserve System Member Federal Deposit Insurance Corp. 1966 OLDSMOBILE Jet Star 88. Power steering, power brakes, 390 cc., perfect mechanical condition, body fair, \$300. Call 475-2315.

# Community Calendar

**Chelsea Co-Op Nursery** is now taking applications for the 1977-78 school year. Anyone interested in registering their child should contact Virginia Harvey after 5, at 475-2052.

**Chelsea Co-Op** on North Territorial Rd. needs pre-schoolers for this fall. Experienced teacher, fun program and new facilities. All three-, four-, and five-year olds welcome. For more information call 485-8388 or 475-1537.

**Chelsea Co-Op** on North Territorial Rd. needs pre-schoolers for this fall. Experienced teacher, fun program and new facilities. All three-, four-, and five-year olds welcome. For more information call 485-8388 or 475-1537.

**Chelsea Co-Op** on North Territorial Rd. needs pre-schoolers for this fall. Experienced teacher, fun program and new facilities. All three-, four-, and five-year olds welcome. For more information call 485-8388 or 475-1537.

## DEATHS

### Mrs. Lee Ferguson Dies at Chelsea Hospital Following Lung Illness

Mrs. Lee E. Ferguson, 61, died at Chelsea Hospital on Thursday, June 22, after an illness of several years. She was born Oct. 7, 1916, in Chelsea, the daughter of Hugh and Lucie Burnett. She married Lee E. Ferguson on July 14, 1937. He survives.

Mrs. Ferguson was a member of the First Congregational United Church of Christ of Chelsea. She had served on the McKune Memorial Library Board and was a member of the Chelsea Woman's Club and an active partner in the Chelsea Art Center. She had been employed as a secretary by the A.D. Mayer Insurance Agency and by a Chelsea attorney, as well as by the University of Michigan's Chemistry Department.

Other survivors, in addition to her husband, are two sons, Jay R. Ferguson of Troy, Donald L. Ferguson of Ann Arbor; two daughters, Mrs. Robert (Marjorie) Daniels of Chelsea and Mrs. William (Thelma) Lawrence of Ann Arbor; and 12 grandchildren.

Funeral services were held at 1 p.m. Monday, June 23, at the Burghardt Funeral Home with the Rev. Carl W. Schwarm officiating. Burial followed in Webster Congregational Church Cemetery. The family suggests that those desiring to do so may make contributions in Mrs. Ferguson's memory to the McKune Memorial Library.

### Arthur C. White Dies Suddenly June 21 at Cavanaugh Lake Rd. Home

Arthur Glenn White, of 24 Cavanaugh Lake Rd., died suddenly at his home, June 21, at the age of 53. He was born March 25, 1920, at Richmond, Va. His parents were John and Rosa May Ragland White.

He was employed at North American Rockwell as assistant quality control manager.

He is survived by his widow, the former Evelyn Nickell, one daughter, Kathryn of San Francisco, Calif., one step-son, Philip McDaniels of Chelsea, and one step-daughter, Teresa Abdon of Chelsea. Also surviving are two sisters, Mrs. Hubert (Betty) Richardson of Cecelia, Ky., and Mrs. George (Dorothy) Sumner of Louisville, Ky.

He was a member of the Muth Rod and Gun Club and a life member of the National Rifle Association.

Funeral services were held Sunday, June 24, at Staffan Funeral Home, at 2 p.m., with the Rev. Clive H. Dickens officiating. Burial followed in Oak Grove Cemetery.

### John A. Nalepa, 16, Dies

A son, John A. Nalepa, 16, died in Toledo, O., on Monday, June 19, at the home of his parents, Mr. and Mrs. John Nalepa of Temperance. Mrs. Nalepa is the former Elizabeth Ann Bower, daughter of Mr. and Mrs. Benjamin Bower of 18010 Cavanaugh Lake Rd. Paternal grandparents are Mrs. Valesta Nalepa of Temperance.

### Free Swimming

their stops at 2:30 when the free swim is over.

Jim Tallman, director of the swim program, is convinced that many Chelsea youngsters are casting about for something to do, never realizing this activity is available to them. Only 25 youngsters took advantage of the activity Monday, the first day. The program is meant for at least twice that number.

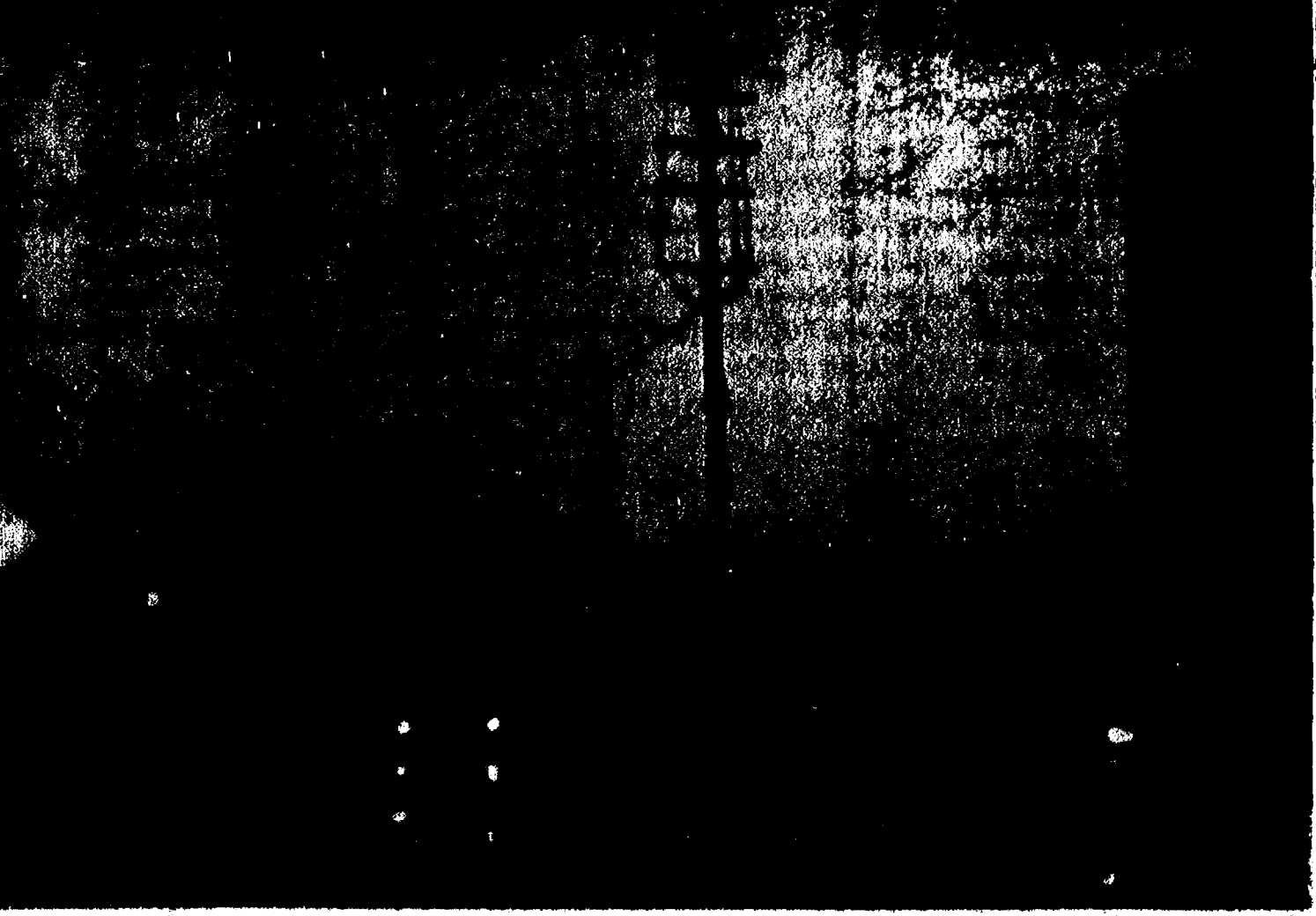
### Armed Robbery

itions for 10 to 20 years. He had pled guilty to armed robbery. A sentence of three years, four months to five years was handed down on the charge of entering an unoccupied building, Edward's Jewelers in Ann Arbor, with the intent to commit larceny. That time in prison will be served concurrently with the first sentence.

Huffman was also sentenced to 45 days in county jail for malicious destruction of private property. He was given credit for serving that time while awaiting the outcome of his trial.

### Drug Charges

Even though the work of the Citizens Advisory Committee is well along, any member of the community desiring to contribute ideas and time to the finalization of this work is invited and encouraged to contact either V. O. Johnson at 475-1459 or Charles Cameron at 475-1377 for placement on a sub-committee.



FOREBODING SKIES warned area residents Tuesday evening that they were in for quite a storm. And they were. This photo shows the 5 o'clock darkness in which headlights were needed by the homeward bound motorists. While not as violent here as it was in Detroit and Ann Arbor, the storm nevertheless nearly stopped 5 o'clock traffic with torrential rains and whipping wind. In the midst of it, Chelsea firemen were called to the Gordon Crawford home on Fletcher Rd., that was struck by lightning. Damage was slight other than that in this area.

## Farm Fuel Supplies Cut But Not Critically

Oil company agents who supply fuel to area farmers report that the slightly tight supplies are being divvied out in allotments based on last year's sales. So far the situation is not as crucial as it is confining.

The agents cannot hope to expand their business under present conditions. They are pushed enough trying to meet the needs of the clients they now have. Similarly, farmers face the possibility of running low on fuel if they dare increase production over a year ago.

Nevertheless, say the suppliers, there has been a minimum of inconvenience so far. Although some farmers have been allowed only 100 gallons of fuel at a time, apparently they have never been turned away. For the farmers this may mean running out of fuel in the middle of sowing a field, but at least they have been able to keep their machines moving.

For Marquita and Jerry Satterthwaite, area suppliers of Quality-Ashland fuel, the so-called fuel shortage is not new. Their company put them on an allotment a year ago. "We've had time to get used to it," says Marquita.

Although their supplies have been cut a little more this year, the Satterthwaites have been able to satisfy the requests from their customers so far. They do worry about further curtailment of supplies in the months ahead.

The current situation has caused a more drastic change in policy for Standard Oil agent George Knickerbocker. He reports that within the next few weeks he will begin to conform to Federal guidelines that suggest gas be distributed according to consumption during 1971-72.

Knickerbocker says the situation has been "uncomfortable" since last winter but that last month he was able to supply at least 94 percent of what his customers required a year ago. "Presently I can give them what they need, but the hardship will come if my customers increase production and need more than they did a year ago," he says.

Without being an alarmist, Knickerbocker passes on what he's heard from his company. "The shortage could last into the 80's unless those environmentalists get off of it and let the oil companies do more off shore drilling and let the pipeline through."

Bob Gilbert, a supplier of Washtenaw Farmers Oil in Dex-

## Library's Summer Reading Program Gets Underway

Mrs. Russell Bernath of McKune Memorial Library has announced that the summer reading program at the library is once again underway.

Tuesday, the library staff began to welcome youngsters to the library to choose their summer reading. Children participating are given a chart to mark the number of books read.

At the end of the program, which will conclude in mid-August, the librarians may plan a social hour for the children which will include a film. Any young readers in the community are welcome.

Mrs. Bernath says that they expect their participants will be in the first grade and on up but she does not want to discourage anyone from participating.

The library hours are: Monday, 10 a.m. to 5 p.m., 7 a.m. to 9 p.m.; Tuesday, noon to 5 p.m.; Wednesday, noon to 5 p.m., and 7 p.m. to 9 p.m.; Thursday, 10 a.m. to 5 p.m.; Friday, noon to 5 p.m., 7 p.m. to 9 p.m.; and Saturday, noon to 5 p.m.

## Herman Koenn Earns U-M Real Estate Certificate

A class of 172 men and women received final real estate certificates from the University of Michigan at annual recognition exercises Friday, June 22.

Among them was Herman L. Koenn of 2010 Hayes Rd., Chelsea. Students receive the certificate in real estate after completing at least five required courses and three electives. Enrollment is open to persons already in the real estate business and to those with no previous experience.

The program is presented by the U. of M. Extension Service and Graduate School of Business Administration in co-operation with the Michigan Real Estate Association.

## 'Fiddler' Tickets

(Continued from page one)

your order to "Fiddler on the Roof," Box 82, Chelsea. Opening night is Aug. 2, the first of three consecutive performances.

## Advisory Committee

(Continued from page one)

in the county over the last months. At the time of their arrests, they had been under surveillance by the Washtenaw Area Narcotics Team since March 20. Talbot Smith is defending the two Chelsea girls and Lynwood Noah is prosecutor in the case.

# Fuel Shortage

(Continued from page one)

two Boron pumps appear to be in no danger of drying up.

Brad Smith says his Quality station doesn't pump enough gas to be much involved, yet. "If the stations by the highway begin running low, I suspect I'll start selling more gas," he says "then I might get low."

For other station owners, the situation poses the problem of trying to deal with the uncertainty—supplies may be cut back even more—while providing their customers as best they can. At Jim Kallshek's Union 78 and Glenn's Mobil, the regular customers come first. Brad Smith, too, has said if his supplies run low, he'll limit sales to his "regulars."

Says Mrs. Kallshek, who is keeping an eye on the store while her husband recovers from a June 2 automobile accident, their decision to close Sundays was based on a desire to conserve supplies for the local folks. The last Sunday they remained open, June 16, they sold a record breaking 1,000 gallons in one day. "We don't dare do that every Sunday," says Mrs. Kallshek. "We have commercial accounts and regular customers to look out for." She hopes the shortened hours will leave enough for "the working man who has to get to work."

Similarly, Glenn Heim, who was suddenly told last Thursday that he'll be unable to get anymore gas until July 1, was forced to slash hours. He imposed a \$5 limit on strangers while allowing regular customers to have fill-ups.

Ron Bush, who works at Pump & Pantry, said they were running low on regular last week-end but the management decided to sell till the tanks went dry. Sunday night at 10:30, they did.

The policy at Jiffy Market and Stuckey's is to stretch the supply so everyone will have some. Ten-gallon limits per customer were enforced for old friends and new. Said Shoemaker "If I have to close down my pumps because I can't get gas, it won't be Marathon I'm selling when I open them up again."

But shortened hours seems to

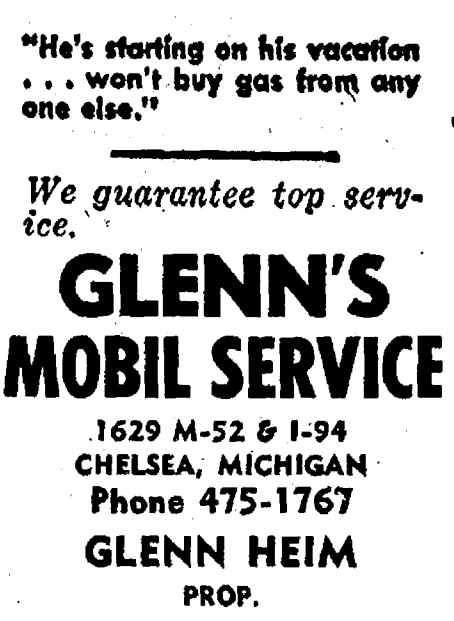
be the solution for most establishments including Ralph Fletcher's Mobil, the Marathon at Fletcher Rd. and I-94 and the Shell Station on M-52 at I-94. The latter station, however, will be one of the few serving Sunday's booming trade. Having opened just six weeks ago, it is more dependent than the long-established local stops on strangers passing through.

Yet all these policies are tentative, as owners and consumers alike wait to see what next month's quotas will be. Hopes are not high. The big companies are already predicting a heating fuel shortage for next winter as they dip into crude oil reserves to produce the needed gasoline.

So if you can't afford to get away from the summer heat because of the gas situation, take heart. You may be more thoroughly cool this winter.

## Mobil-Toons

By GLENN

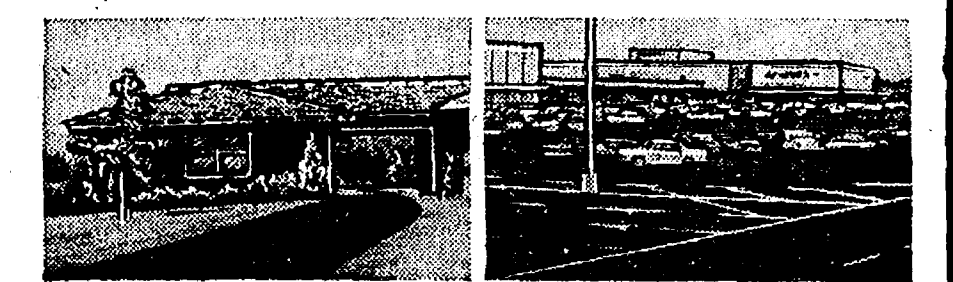


"He's starting on his vacation... won't buy gas from any one else."

We guarantee top service.

## GLENN'S MOBIL SERVICE

1629 M-52 & I-94  
CHELSEA, MICHIGAN  
Phone 475-1767  
GLENN HEIM  
PROP.



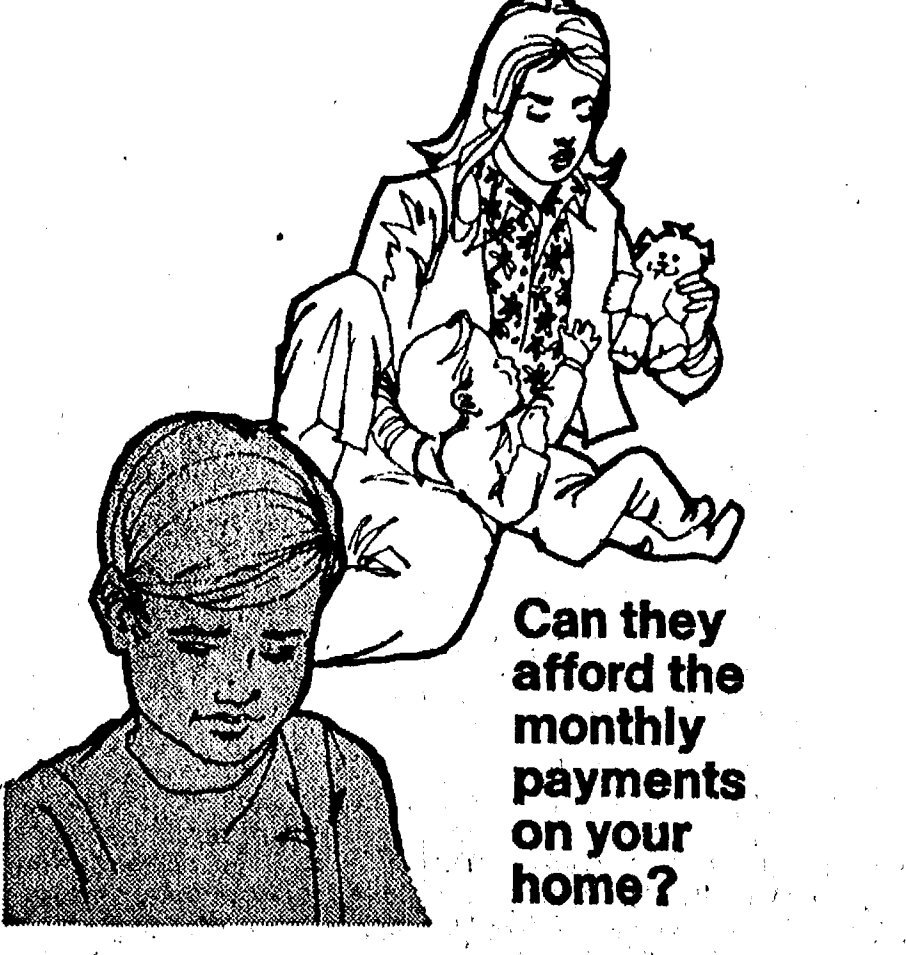
## IF YOU OWN AN ASPHALT DRIVEWAY... YOU NEED PROTECTION TODAY!

TOP DRIVEWAY DRESSING

5 GAL. Thru July 7th \$4.95

## CHELSEA LUMBER

SAVE - SAVE - SAVE



Can they afford the monthly payments on your home?

Suppose your wife had to do it on her own. Chances are she couldn't afford those monthly payments and preserve your estate as well. Unless, of course, you plan for it now—with our "altogether" mortgage insurance. Because it has a fixed term and covers only the amount of your mortgage, it won't cost as much as you might think. Give us a call now. You don't have to buy a new house to be eligible. You're eligible anytime. Altogether insurance—to help the family stay all together.

# it's better altogether

**A. D. MAYER AGENCY, INC.**  
115 PARK ST., CHELSEA  
BOB BARLOW, AGENT  
PHONE 475-2030

*Auto-Owners Life Insurance Company*

# WATCH FOR OUR RE-OPENING!

We regret not being able to service our power equipment customers since our shop burned. Arrangements are now being made to re-open a larger, more adequate facility at 120 South Main as soon as alterations can be made and shop equipment replaced.

**CHELSEA HARDWARE**  
110 S. MAIN ST. PHONE 475-1121



YOU'RE MONEY AHEAD WHEN YOU USE SHERWIN-WILLIAMS HOUSE PAINT

Gives you extra years of beauty and protection

JUST ARRIVED!  
**Gloss Latex House & Trim Paint**  
The Protection of Gloss... With the Ease of Application of Latex.  
More than 30 colors to choose from.

**GAMBLES**

110 N. Main  
Chelsea  
Phone 475-7472

Dexter American Legion

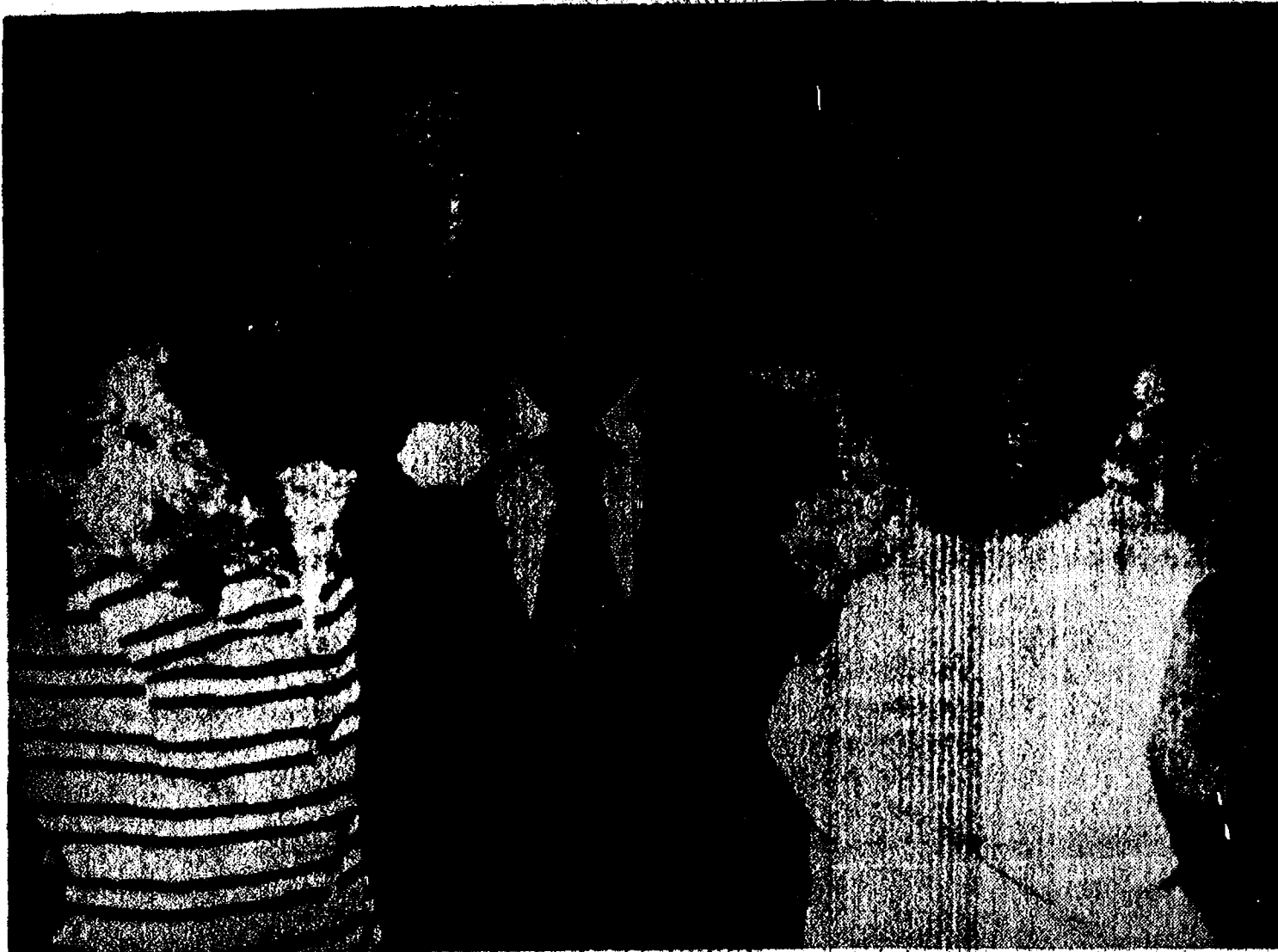
presents

STEAK BROIL  
Wednesday, July 4

Serving 12:30 to 3:30 p.m.

BROILED STEAK - BAKED POTATO  
SALAD - ROLL - BEVERAGE — \$3.00  
FOR CHILDREN: HOT DOG - POTATO CHIPS  
SALAD - POP — \$1.00

MEMBERS and GUESTS



HAPPY ANNIVERSARY: Mr. and Mrs. Anton Nielsen celebrated their 45th wedding anniversary, Sunday, at a well-attended open house at their home. Guests included Anton's sister, Anna, left, who flew in from Denmark for the occasion.

Nielsens Observe 45th Wedding Anniversary

Rebekahs Honor Long-Time Members

All members of Chelsea Rebekah Lodge No. 130 who have been members for 35 years or more were honored at the June 19 meeting. A gold chain, representing all members, was used to encircle the honored members.

As a welcome was read by Loyadell Keezer, the conductor and warden presented them to the group. Mrs. Nina Lehmann read an original poem for the occasion.

Each of the following received a gift for their many years of service: Mrs. Lottie Alexander, 55 years and the only charter member; Eva Barber, 55 years; Gladys Breitenwischer, Elsie Hinz, Oscar and Mable Barth, all 52 years; Lulu Sweeny, 51; Stella Thorne, 48; Luella Weinberg, Edith Hoffman, 42; Vera Munro and Edith White, 41; Anna Stofor, Helen Leggett and Kathleen Bernath, 38; and Lucile Altstaetter, 35 years.

Mrs. Sweeny and Mrs. Barber were presented certificates for 50 years. Other members who have been members for over 50

years were remembered specially when their year arrived.

It was moved to vacation after the first meeting in July until Sept. 3. The newly-formed degree team will vacation until September, at which time Evelyn Hale, degree captain, will call a meeting.

The next regular meeting will be held July 3, at 7:30 p.m. The committee for the last meeting was Mrs. Helen Leggett, Olga Voelm, and Ruth Riemen-schneider.

James McDonald  
Granted BS Degree  
At Michigan Tech

Michigan Technological University awarded more than 660 degrees during commencement exercises at 10:30 a.m. Saturday, June 16, in the Student Ice Arena.

James H. McDonald, son of Mr. and Mrs. Harold McDonald of 16621 Kilmer Rd., was among them as he received a Bachelor of Science degree in Chemical Engineering.

Mr. and Mrs. Anton Nielsen celebrated their 45th wedding anniversary with a Sunday afternoon open house, June 24, at their home, 404 Garfield St.

Guests came from as far away as Copenhagen, Denmark, as well as from Florida and all over Michigan. Mrs. Fred Fisher who had been matron of honor at the Nielsen wedding, June 21, 1928, came from Grosse Pointe Farms to attend. The best man, Max Nelson of Lynwood, was also present.

Nielsen's sister, Anna of Copenhagen, sent word from Denmark that she would be arriving for the occasion. The Nielsens drove to Chicago Thursday to meet her plane. They had last seen her last year when they visited Denmark.

Fortune Industries  
Union Unit Elects

Voting at the Fortune Industries unit of UAW Amalgamated Local No. 437 resulted in the election of Myrna Salyer as chairman. Committeemen elected are Millard Conley and Ray Hyden.

Subscribe today to The Standard!



SUFFER THE LITTLE CHILDREN to come unto me: The sanctuary of the Methodist church was filled Thursday during the closing program of this year's Vacation Church school. Children of all ages participated in the final group sing, which climaxed a week of classes constructed around a theme of "God in Nature."

Vacation Bible School Closes

The Methodist Church Vacation Church school, under the direction of Sharleen Eisenbeiser, was a great success this year. Eighty students ranging from two years old to six graders registered. An average of 76 participated each day.

This year's theme, "God in Nature," was carried out by a staff of 42 persons. Netta Mills and Gloria Greenleaf directed arts and with the help of Scheila Goetzinger, Joanne Allen and Marty Beth Allen manging the two and three year-olds. Helping with the four-and five-year-olds were Francis Lorenz, Mary Spencer and Diane Van Gorter.

Carolee Hoffmeyer, Mary Mullison and Tammy Lorenz helped with the first and second graders while Barbara Clark and Martha Schultz did the same with the third and fourth graders.

Fifth and sixth graders were supervised by Sally Dickens and Carol Benedict. Arrangements for

refreshments were handled by Dorothy Spencer.

Workers in the nursery were Dennis Robbins, Becky Harbaugh, Joann Feldkamp, Pauline Porath, Judy Boyer, Noreen, and Beth and Colleen Collins, Beth Branch, Bonnie Boyer and Betsy Schaefer.

Lesson materials were taught by Mary Kumpf, Virginia Schaefer, Sandy Schmunk, Sally Proctor, Carol Secrease, and Pam Lewis. June Warren and Nancy Barber directed the music.

Music helpers were Shelly War-

ren, Kathy Slater, Mark Dickens, Holly Hoffmeyer and "Uncle" Bob Benedict of his ukelele.

At a pot-luck dinner, held Thursday, June 21, with 120 attending the grace was given by fifth and sixth grade members of the school.

Table decorations at the final gathering consisted of groups. Mrs. Eisenbeiser thanked her helpers, students and parents supporting this year's program.

The closing program, held in the sanctuary, included individual numbers by the separate classes and an entire group number.

The students learned much about music during the week. They used band instruments and hand-made instruments and even wrote the lyrics to a song they sang together.

The finale of the week was a trip to Methodist Children's Village where they enjoyed a tour of the home and presented a gift of money which they had collected during the daily morning exercises.

House Struck  
By Lightning

The Gordon Crawford family had just sat down to dinner, Tuesday evening, when lightning struck. The shock shook the house with such force that they were nearly knocked out of their chairs.

The bolt hit the roof of the home at 3074 S. Fletcher Rd., doing considerable damage to the roofing and ceiling in the upper area of the house. Smoke and water damaged other portions of the house as Chelsea Fire Department put the fire out.

Chelsea firemen received the call at about 5:15 p.m., Tuesday evening, at the height of the violent electrical storm that rocked the area.

Jackson Bus System  
Receives State Grant

Jackson's bus system got a financial shot in the arm from the state this week.

State Representative Hal Ziegler (R-Jackson) announced today that Jackson will receive a \$13,200 state grant for public transportation agencies.

Grants were made by the Michigan Highway Commission and come from the expected revenue from the new half-cent per gallon gasoline tax increase for mass transportation.

NARROW GAP

The Bruneau Canyon is southwest Idaho drops nearly 1,000 feet between walls so close in places that a visitor in one rim can throw a rock across to the other.

Be a good neighbor  
SUPPORT  
OPERATION  
IDENTIFICATION



See me for complete Operation Identification materials without cost.

WALLACE WOOD  
C. L. U.

105 S. Main; Chelsea  
Phone 475-1511

Identification of personal belongings and household articles can help deter the home burglar. That's why I'm joining local law enforcement officials in urging you to participate in Operation Identification.



Home Office: Bloomington, Illinois P. 7232

Haggar knits  
high fashion  
hit

This texturized knit has famous Haggar "give" that lets you be a free man — free to move when and where you want without binding or sagging. Herringbone stripe comes in cool summer shades. Flared, flap pockets and belt loops. Washable.

\$16 up



HAGGAR  
slacks

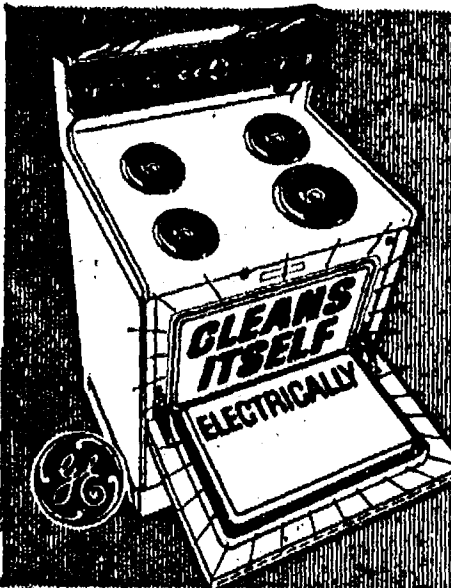
DON'T MISS THE  
ICE CREAM SOCIAL  
and  
FIREWORKS DISPLAY  
at the Fairgrounds  
on the 4th of July.

STRIETER'S  
MEN'S WEAR

"The Place To Go,  
for Brands You Know"

HEYDLAUFF'S GREAT ANNUAL CONVOY SALE  
Now! Get Tremendous Savings on GE Appliances & Television!

DELUXE, EASY-TO-CLEAN  
General Electric RANGE

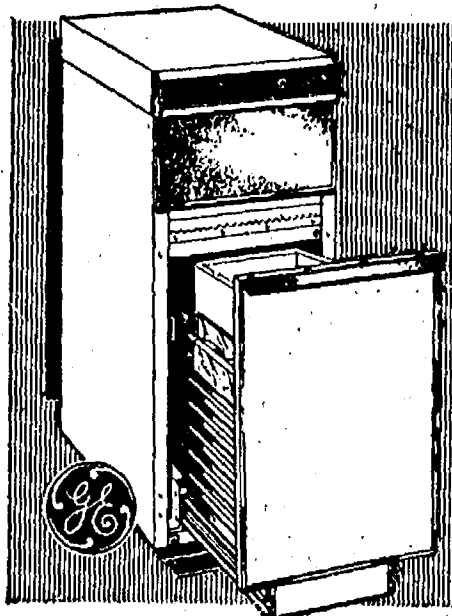


- Automatic P-7\* Total Clean Self-Cleaning oven system
- Automatic oven timer, clock and signal buzzer
- Lighted oven
- Tilt-lock Catrad\* surface units
- Porcelain enamel broiler pan
- Removable storage drawer

Model J351

\$288<sup>00</sup>

Pushbutton COMPACTOR

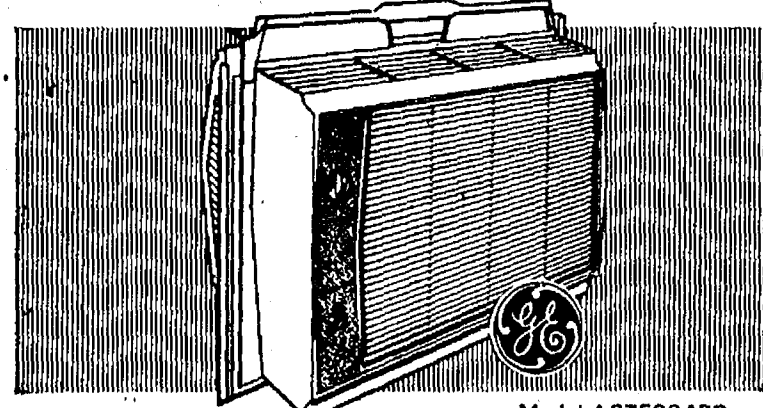


- Easy to operate — just push a button
- Compacts paper, cans, bottles, etc. to less than 1/4 original size
- Safety lock
- Automatic spray — no smell
- Removable front panels 4 colors

Model GCG50

\$199<sup>00</sup>

PORTABLE, CARRY ANYWHERE!  
GE "CARRY COOL"™ AIR CONDITIONER

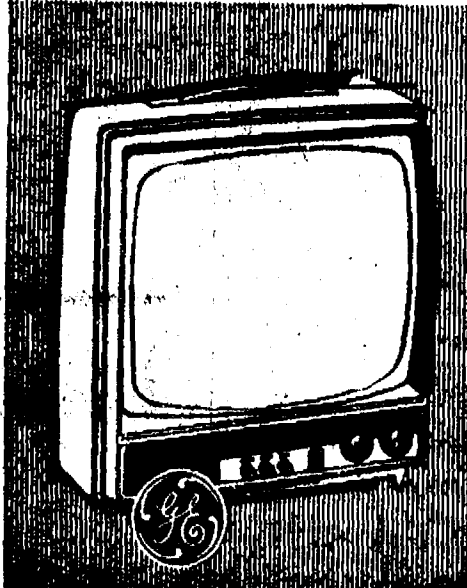


Model AGTE304FB

- 4,000 BTU/HR. cooling
- Only 43 lbs., 7 amp., 115 volt
- Use it at home or take it traveling
- Durable molded Lexan\* case
- Automatic thermostat maintains pre-selected comfort level

\$99<sup>95</sup>

15" DIAGONAL  
PORTABLE Black & White TV

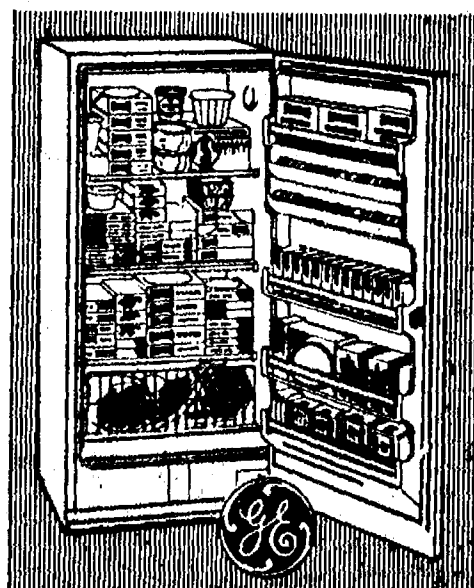


- 100% Solid State Chassis
- Silver touch tuning
- Built-in antenna system
- High impact polystyrene cabinet

Model SF3101BK

\$94<sup>00</sup>

UPRIGHT STORAGE CONVENIENCE  
14.8 cu. ft. FOOD FREEZER

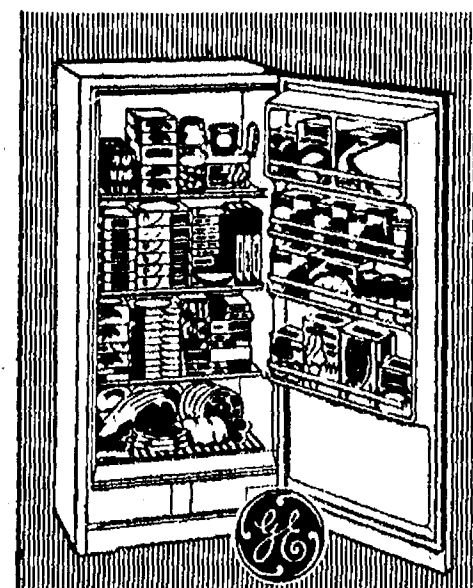


- Holds up to 516 lbs.
- 3 fast-freeze shelves, plus top cold plate
- Door shelves, plus juice can storage racks
- Handy defrost drain
- Interior light
- Slide-out bulk storage basket
- Built-in tumbler lock

Model CA16DP

\$219<sup>95</sup>

EASY, ECONOMICAL FREEZER LIVING!  
10.1 CU. FT. FOOD FREEZER



- Stores up to 352 lbs.
- 3 refrigerated shelves for fast freezing plus top cold plate
- Foods easy to see and reach
- Door shelves. Packages store neatly, visible at glance
- Only 28" wide, 56 1/2" high

Model CA10DP

\$179<sup>95</sup>

HEYDLAUFF'S

113 NORTH MAIN ST., CHELSEA

PHONE 475-1221

# Softball Leagues Swing into Action

## Fast Pitch . . .

The Chelsea Recreation Dept. got its softball leagues started last night at the high school. The home team, the Chelsea Ladies, won 11-0 over the visiting team, the Chelsea Men. The game was officiated by J. Thompson.

M. & M. Graved was the winning pitcher for the Chelsea Ladies. The score was 11-0 with 8 innings pitched. The home team had 11 hits and 11 runs. The visiting team had 0 hits and 0 runs.

The Chelsea Ladies will play the Chelsea Men again on July 3rd at the high school. The game will start at 7:00 p.m.

## Slow Pitch . . .

In slow pitch games during the week, IPSCO and Lanewood battled to a 9-5 win for IPSCO with Phillips taking the glory on the mound. Greenleaf was the losing pitcher.

Walt's Clippers trimmed Rockwell International, 10-3, with three home runs coming from B. Stevens, C. Collier and B. Vogel. Waller took the loss.

Mark IV slipped by the Chelsea Methodist Home players, June 14, 15-13. The winners saw home runs from Reifel and Smith. Pitching for Mark IV was L. MacColman. C. Warren took the loss.

Village Motor Sales batted in 17 runs to Rulea Farms' six June 14. Miller pitched for Village Motor Sales and Vogel tossed for Rulea Farms. Homers came from the bats of Lakley for the Motor Sales and Colvia for Rulea Farms.

Walt's Clippers were sharp again, June 19, when the pruned Lanewood, 7-12. The Clippers had Cornish on the mound and a homer from Daily. Stirling batted 4 for one for Lanewood. Hume was Lanewood's pitcher.

Rockwell International suffered another defeat at the hands of IPSCO, June 19, with a 9-4 score. Phillips was again the winning pitcher and Waller was the loser.

With M. Ruhlig on the mound, Rulea Farms defeated Chelsea Methodist Home. Both McCalla and Porath batted round trips for the Home; Foster and Colvia had two apiece for Rulea Farms.

Village Motor Sales zoomed ahead of Mark IV in five innings, June 21, winning with a score of 15-5. Dozier was winning pitcher. Pitching for Mark IV was L. MacColman. Village Motors had two home runs, one each from Ladley and Wallace. Mark IV had one from Reifel.

Waller pitched Rockwell International to a win over Lanewood, June 24. Greenleaf took the loss, 16-5. Newmeyer hit the one home run of the game for Lanewood.

June 25th, Westgate Auto did a job on Adam Printing taking the game 11-0. O'Haber was again pitching for Westgate auto while Reifel pitched for the printers. That game was followed by a contest between St. Paul and Lanewood in which the churchmen came up victorious. Making home runs for the Sweepsters were M. Treaco and J. Bohan. Bohan did the same for St. Paul's. Pitchers were J. Marshall for the church, D. Clark for Sweepsters. St. Paul was up again June 18, when they met and defeated Chelsea Methodists, 11-1. Galbraith led the winners from the mound while R. Paynter and Bingel pitched for the churchmen.

Wolverine Bar downed Zion Lutheran, 12-0, that same night in spite of Zion's two homers by V. Kowmeger and L. Jacobs. E. Berlin hit a homer for the Wolverines. B. Pidd and D. Bycraft were pitchers with the former taking the prize.

St. Paul's Angela scored over Adair, 15-5, June 24. Galbraith directed the victorious chorus from the mound. Klapper and Buckner pitched for the losers.

# Recreation Program Schedule

Weeks of June 25-Aug. 3

- Monday, Wednesday, Friday—9:00-11:30 a.m.—Little League at the high school.
- Tuesday and Thursday—9:00-11:30 a.m.—T-ball at the high school.
- Monday, Wednesday, Friday—9:00-11:30 a.m.—Tennis lessons at the high school.
- Monday, Tuesday, Wednesday, Thursday, Friday—9:00-11:30 a.m.—Arts and Crafts at South school.
- Monday, Tuesday, Wednesday, Thursday—8:00-5:00 p.m.—Girls' Softball at South school.
- Tuesday and Thursday—5:00-7:00 p.m.—Habe Ruth games at the high school and South school.
- Monday, Tuesday, Wednesday, Thursday, Friday—6:30-8:30 p.m.—Men's Softball games at the high school.
- Monday—5:00-7:00 p.m.—Gymnastics for 3rd and 4th grade girls at the high school.
- Tuesday—6:00-7:00 p.m.—Gymnastics for 6th and 8th grade girls at the high school.
- Thursday—5:00-7:00 p.m.—Gymnastics for 1st and 2nd grade girls at the high school.

A Standard Want Ad will get you quick results!

# St. Louis School Notes

The anniversary of Father Louis Grangi's 25 years in the priesthood was celebrated first by the staff and student body of St. Louis school, and then by St. Mary's parish in Manchester last week. The anniversary was celebrated, June 13, at the school after Father Louis began the day by celebrating the mass. Father Raymond Schlinterk, of Manchester, gave the sermon.

The church service was followed by a dinner in Father Louis' honor, attended by Father Schlinterk, Father Dupuis of Chelsea's St. Mary's, and sisters from Northville, Willis and Canada. Dr. Segal of the University of Michigan was another guest.

Father Umberto led the band in a few choice numbers as the company sat down to tables decorated by Fathers Germano and Fortunato. Sister Mary Gibin and Mrs. Robbins served the dinner which included a cake decorated with flowers.

After a deluge of congratulations, Fr. Louis thanked the group for his party. He later took the boys to the Dairy Queen for a summer snack. The boys have since gone home for the summer. They will return Sept. 6.


Father Louis was feted again, June 23, when Manchester's St. Mary's parish hosted a reception for him. Cake and punch were served as the priest was presented with donations.

Next week he leaves on a trip to Italy where he will attend a meeting of the First Provincial Chapter of the Roman Order of Providence, S. of C. He will also attend classes on the mentally retarded and will visit his two brothers in Como, Italy, before returning to Michigan at the end of the month.

The American family is now spending less than 16 percent of its total disposable income on food.

**LOSE UGLY FAT OR PAY NOTHING**  
Start losing weight today OR MONEY BACK. MONDEX is a tiny tablet that will help curb your desire for excess food. Eat less-weight less. Contains no dangerous drugs and will not make you nervous. No strenuous exercise. Change your life today. MONDEX costs \$3.00 for a 20 day supply and \$5.00 for twice the amount. Lose ugly fat or your money will be refunded with no questions asked by CHELSEA DRUG STORE Chelsea - Mail Orders Filled

## Tastes good!



Milk's a taste treat for the entire family to enjoy daily.

Arrange delivery of our top-quality milk and other dairy products.

# Hickory Ridge Farm Dairy

(Successor to Weinberg Dairy)  
Stockbridge, Mich. Phone (517) 851-3000

Got the paint job blues?

Try our reds and yellows and greens and pinks.

Finding that special color—the one that's just right for you—can run you ragged. Unless you see the Dutch Boy® Spectral Range color system first. There are over 2,000 colors to choose from and they're available in almost any finish. If you still have the blues, we can help there, too. There are over 300 blues in the system. Let us help you find your color.



**MERKEL BROS.**  
Phone 475-8621

## Servicemen's Corner

**Sgt. Dennis Grieb On Duty in Guam**  
Agana, Guam—U.S. Air Force Sergeant Dennis D. Grieb, son of Mr. and Mrs. Earl R. Grieb, 8134 Werkner Rd., Chelsea, Mich., has arrived for duty at Andersen AFB, Guam.

Sergeant Grieb, an air freight specialist, is assigned to a unit of the Strategic Air Command. He previously served at Travis AFB, Calif.

The sergeant was graduated in 1970 from Vandercook Lake High School, Jackson, Mich.

**WEATHER CITED**  
Unfavorable weather across the nation last year boosted fresh vegetable prices from fall 1972 until now. If good weather prevails, 1973 spring and summer growing seasons could bring prices down, Michigan State University economists say.



# Polly's MASTER MARKETS

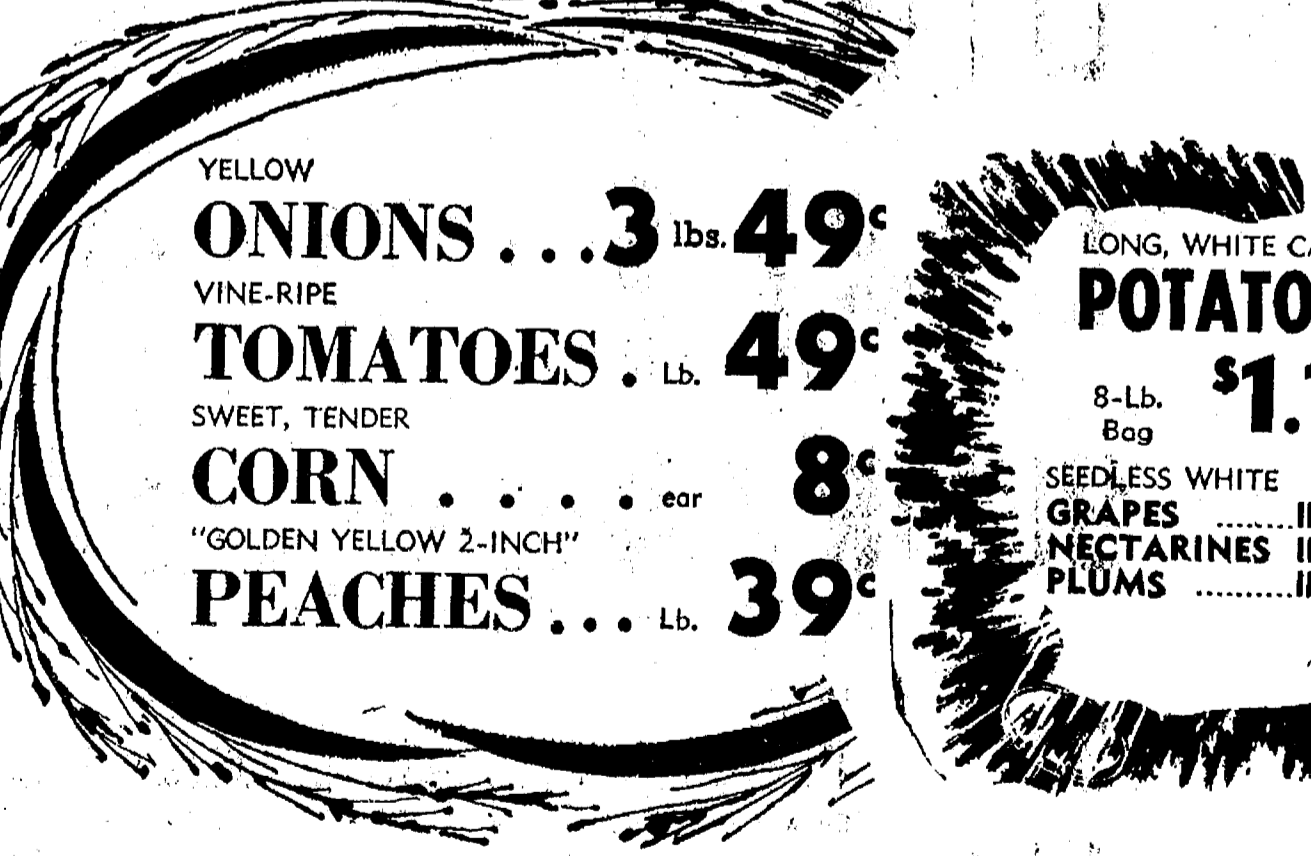
1101 M-52 CHELSEA

## CONVENIENT STORE HOURS

OPEN Monday thru Saturday - 8 a.m. to 10 p.m.  
OPEN Sundays, 8 a.m. to 7 p.m.

**OPEN JULY 4th, 8 a.m. to 7 p.m.**

FARMER PEET'S SMOKED HAM . . . . . lb. 79c	FRESH FROZEN HAND CUT FRYER LEGS . . . lb. 69c
12-Oz. Pkg. Hygrade's Pure Pork Baby LINK SAUSAGE . . . 88c	16-OZ. AND UP PARTS MISSING CORNISH HENS . . ea. 75c
10-OZ. PKG. HYGRADE EXTRA LEAN BOILED HAM . . . . 99c	5-Lb. Can Quality Plus Lean Fancy CANNED HAM . . . . \$5.99
HYGRADE'S DELUXE SEMI-BONELESS W. VIRGINIA HAM lb. \$1.19	Farmers Peet's Skinless Defatted Boneless BONANZA HAM . lb. \$1.39
FARMER PEET'S FARMHOUSE SLICED BACON . . . lb. 89c	With Coupon
FARMER PEET'S BULK RING BOLOGNA . . lb. 99c	QUARTERED PORK LOIN PORK CHOPS . . . lb. 98c
12-Oz. Pkg. Farmer Peet's Assorted LUNCH MEATS . . . . 79c	MR. BOSTON BREADED PERCH . lb. 79c
8-OZ. PKG. ECKRICH HONEY LOAF . . . . 89c	MR. BOSTON BREADED SOLE . . lb. 79c
HYGRADE CHUNK BRAUNSCHWEIGER lb. 69c	MR. BOSTON BREADED COD . . lb. 79c
	MR. BOSTON Breaded Flounder . lb. 79c



YELLOW ONIONS . . . 3 lbs. 49c

VINE-RIPE TOMATOES . . lb. 49c

SWEET, TENDER CORN . . . . . ear 8c

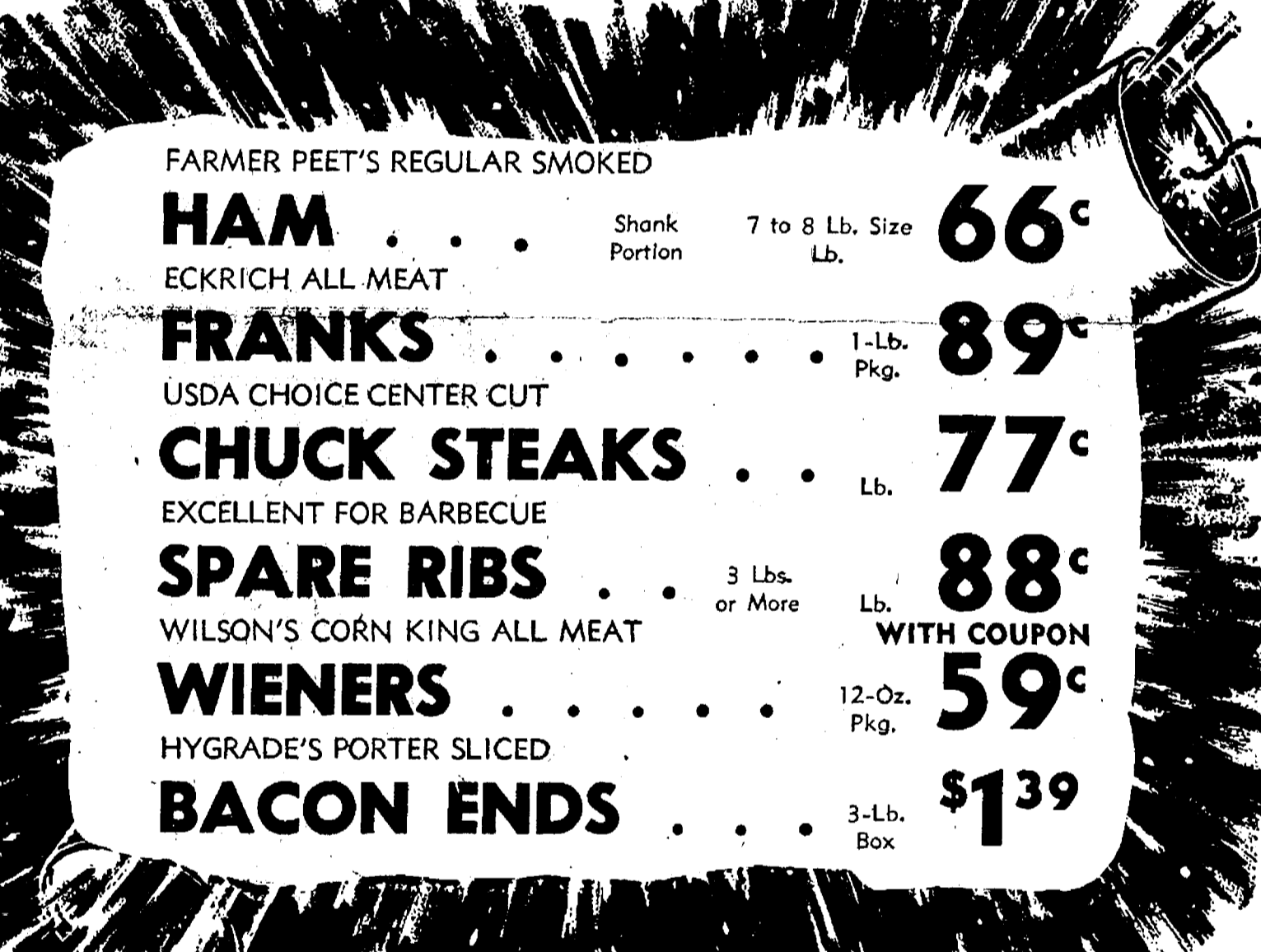
"GOLDEN YELLOW 2-INCH" PEACHES . . . . . lb. 39c

LONG, WHITE CALIF. POTATOES . . . . . 8-Lb. Bag \$1.19

SEEDLESS WHITE GRAPES . . . . . lb. 49c

NECTARINES lb. 49c

PLUMS . . . . . lb. 49c



FARMER PEET'S REGULAR SMOKED HAM . . . . . Shank Portion 7 to 8 Lb. Size . . . . . 66c

ECKRICH ALL MEAT FRANKS . . . . . 1-Lb. Pkg. . . . . 89c

USDA CHOICE CENTER CUT CHUCK STEAKS . . . . . Lb. . . . . 77c

EXCELLENT FOR BARBECUE SPARE RIBS . . . . . 3 Lbs. or More . . . . . 88c

WILSON'S CORN KING ALL MEAT WIENERS . . . . . 12-Oz. Pkg. . . . . 59c

HYGRADE'S PORTER SLICED BACON ENDS . . . . . 3-Lb. Box . . . . . \$1.39

FRESH GROUND ALL BEEF HAMBURGER . . . . . 3 Lbs. or More . . . . . 88c

FRESH DRESSED SPLIT BROILERS . . . . . Lb. . . . . 49c

**BONELESS HOLIDAY COOKOUT MEATS!**

USDA CHOICE CLUB STEAK . . . . . lb. \$1.99	USDA CHOICE TOP SIRLOIN STEAK . lb. \$1.89
USDA CHOICE SIRLOIN TIP STEAK . lb. \$1.79	USDA CHOICE ROLLED RUMP ROAST, lb. \$1.49

CALL OR STOP IN

# CHELSEA GLASS WORKS

WORKMANSHIP AND MATERIALS FULLY GUARANTEED.  
Open Daily 8 a.m. to 5 p.m.; Sat., 8 a.m. to 1 p.m.

140 W. Middle, Chelsea Phone (313) 475-8667

**WE REPAIR AND REPLACE:**

- ★ STORE FRONTS
- ★ FURNITURE TOPS
- ★ SHOWER DOORS
- ★ THERMOPANES
- ★ AUTO GLASS - Including Windshields
- ★ Free Pick-up and delivery on auto work
- ★ Storm Door & Window Reglazing & Screens
- ★ COMMERCIAL BUILDINGS OR RESIDENTIAL
- ★ PROMPT SERVICE
- ★ MIRRORS
- ★ PATIO DOORS
- ★ TUB ENCLOSURES
- ★ REASONABLE PRICES

**VALUABLE COUPON**

WILSON'S CORN KING ALL-MEAT WIENERS  
12-Oz. Pkg. 59c


With \$3.00 purchase. SAVE 20c WITH COUPON. EXPIRES JULY 1, 1973



**VALUABLE COUPON**

QUALITY PLUS LEAN FANCY CANNED HAM  
5-Lb. Can \$5.99

With \$3.00 purchase. SAVE \$1.00 WITH COUPON. EXPIRES JULY 1, 1973



**VALUABLE COUPON**

BORDEN JUMBO TREAT ICE CREAM  
Gal. 99c

With \$3.00 purchase. SAVE 30c WITH COUPON. EXPIRES JULY 1, 1973



**VALUABLE COUPON**

ELF CHARCOAL BRIQUETS  
5-Lb. Bag 49c

With \$3.00 purchase. SAVE 28c WITH COUPON. EXPIRES JULY 1, 1973





**Faster gains from better FEEDS**

Calves get growing and getting faster, on our balanced, fortified Calf Feed... enriched with needed vitamins, minerals.

**FARMERS' SUPPLY CO.**  
PHONE 475-1777

### Etching Pencils Offer Theft Protection

Burglaries are more the exception than the rule here in Chelsea, and Chelsea Chief of Police George Meranuck wants to keep it that way.

One good way to keep thieves away, he says, is to mark your valuables so they may be easily identified. Wallace Wood is fighting crime just that way by using two electric etching pencils to interested citizens so they can mark their televisions, radios, cameras and stereos with their driver's license number.

The etching pencils, procured through State Farm Insurance Co., are available first to Wood's insurance customers, but he is willing to let anyone in the community borrow them in order to mark their belongings.

Both Wood and Meranuck report that the system of identifying objects has been successful in other communities, especially when it is coupled with warning stickers such as are distributed by State Farm.

The stickers inform potential thieves that items of value on the premises have been marked for ready identification by law enforcement agencies. That in itself is often enough to protect the belongings.

In the event that an identified object is taken, thieves often find it difficult to sell it because prospective buyers are wary of the identifying marks that suggest it belongs to someone else.

Wood thinks that marking your belongings makes sense, especially in Washenaw county. The seriousness of the crime rate in the county is demonstrated, he says, by the fact that in the last year, State Farm paid \$1.19 in claims for every \$1 paid in premiums on vandalism, theft and burglary policies.

Those interested in marking their valuables may contact Wallace Wood at his State Farm insurance office on Main St.

Per capital turkey consumption in this country increased from 8.1 pounds in 1960 to 8.9 pounds in 1972.

### 14th District Court Proceedings

**Week of June 18-25**

In 14th District Court during the week of June 18-25, Mary Kay Shehan was arraigned for fraudulently uttering and publishing. His case was bond over to circuit court, June 22. The bench reduced his bond to \$3,000 cash or security.

Larry Sweet was sentenced to a fine of \$150 and costs and ordered to attend Alcoholic Education Program for driving under the influence of liquor.

Norman Bush pled guilty to a charge of driving with intoxicants in his vehicle. He was fined \$35 and costs.

Douglas Pickell was charged with failure to maintain a vehicle but the case was dismissed with \$2 costs.

Jimmie Kosinski was arraigned for assault with intent to murder. The charge was reduced to intent to do great bodily harm less than murder and the case was bond over to circuit court, July 20. Bond was reduced to \$5,000.

Robert Redlin was charged with failure to pay fines and costs from an earlier sentence. He was sentenced to pay those fines as imposed in 1972.

Michael P. Geoghegan was arraigned for fraudulently uttering and publishing and waived examination. His case was bond over to circuit court, June 22. The bench reduced his bond to \$3,000 cash or security.

John Stein pled guilty to speeding at 65 mph in a 35 mph zone. His fines and costs were \$31.

Victor Prewitt pled guilty to driving at 65 mph in a 45 mph speed zone. She was fined \$11 and costs.

Renald J. Drake pled guilty to driving at 58 mph in a 35 mph speed zone. His sentence was \$37 fines and costs.

Bobby Fletcher was arraigned on a bench warrant for not paying fines and costs. He was ordered to pay \$30 fines and costs.

Muriel Richardson was found guilty of drunk and disorderly conduct and was sentenced to \$100 fines and costs.

Donald Ortring was pled guilty to driving without an operator's license. His fines and cost amounted to \$75.

Barry W. Rohde pled guilty to speeding at 40 mph in a 25 mph speed zone. He was fined \$46 and costs.

David Miller was found guilty of drunk and disorderly conduct. He was sentenced to pay \$50 fines and costs.

Michael Roskowski pled guilty to eluding a police officer. He was fined \$25 fines and costs.

Joseph Kidd pled guilty to careless driving. He was fined \$39 fines and costs.

Mary Eddy pled guilty to a charge of drunk and disorderly conduct. She was fined \$50 fines and costs.

Kenneth F. Holzapfel pled guilty to driving under the influence of liquor. He will be sentenced Aug. 6.

Leon G. Blades pled guilty to failing to display his operator's license. He was fined \$21 fines and costs.

Kenneth Cowan pled guilty to reckless driving. He will be sentenced July 23.

Renald Bush was sentenced to \$200 fines and costs for impaired driving.

Richard Botmarrio pled guilty to driving at 60 mph in a 35 mph speed zone. His fines and cost amounted to \$41.

Timothy Zick pled guilty to drag racing. His fines and costs were \$35.

Brian D. Hartwick was pled guilty to a charge of driving a boat recklessly. He will be sentenced Aug. 13.

David Miller pled guilty to reckless water skiing. He will be sentenced Aug. 13.

Alan C. Harper pled guilty to a charge of using marijuana. He will be sentenced Aug. 13.

Gary Lee Stobbe was sentenced to fines and costs of \$200 or 30 days in jail for impaired driving.

John Parter pled guilty to traveling at 75 mph in a 35 mph speed zone. He was fined \$71 fines and costs.

Howard A. Stoll was found guilty of driving 60 mph in a 40 mph speed zone. He was sentenced to fines and costs of \$41.

James Tasker pled guilty to speeding at 55 mph in a 35 mph speed zone. His fines and costs were \$31.

Ricky Ledwidge pled guilty to speeding at 68 mph in a 50 mph speed zone. His fines and costs were \$27.

Samuel Ward pled guilty to a charge of drunk and disorderly conduct. He was fined \$35 fines and costs.

Thomas Smith was sentenced to a fine of \$150 and costs and a year's probation for driving under the influence of liquor.

Michael James Neuman pled guilty to giving a false report of a crime. He will be sentenced Aug. 13.

Thomas Tarrice was sentenced to \$50 fines and costs, three months probation and three days on the Chelsea Police Work program for drunk and disorderly conduct.

Robert Arndt pled guilty to parking after hours. He was fined \$10 fines and costs.

Leon E. Desbraugh pled guilty to driving 54 mph in a 35 mph speed zone. He was fined \$29 fines and costs.

James F. Brehm pled guilty to careless driving. He was fined \$34 fines and costs.

Steven D. Benko was found guilty of fleeing a police officer. He was fined \$75 fines and costs, and sentenced to five days with the Whitmore Lake Work Program.

Robert Turner pled guilty to driving at 68 mph in a 50 mph speed zone. He was fined \$27 fines and costs.

Dennis Augustines pled guilty to careless driving. He was fined \$34 fines and costs.

Roger C. Hopkins pled guilty to driving without an operator's license on his person. He was fined \$75 fines and costs, and must work five days on the Ypsilanti Work Program.

Charles Reed pled guilty to driving without an operator's license on his person. He was sentenced to \$75 fines and costs to be paid by June 29, plus a suspended sentence of three days in jail, or 20 days in jail.

Louis Harris, Jr., pled guilty to driving without an operator's license on his person. He was fined \$26 fines and costs.

Buddy Hurst pled guilty to a charge of drunk and disorderly conduct. He was sentenced to a fine \$50 fines and costs plus two year's probation without drinking.

Roger Crist pled guilty to driving without an operator's license on his person. He was sentenced to \$75 fines and costs plus three days on the Chelsea Police Department Work Program.

Charles Reed pled guilty to driving without an operator's license on his person. He was sentenced to \$75 fines and costs to be paid by June 29, plus a suspended sentence of three days in jail, or 20 days in jail.

Louis Harris, Jr., pled guilty to driving without an operator's license on his person. He was fined \$26 fines and costs.

Buddy Hurst pled guilty to a charge of drunk and disorderly conduct. He was sentenced to a fine \$50 fines and costs plus two year's probation without drinking.

Roger Crist pled guilty to driving without an operator's license on his person. He was sentenced to \$75 fines and costs plus three days on the Chelsea Police Department Work Program.

Paul Helm pled guilty to drunk and disorderly conduct. He was fined \$35 fines and cost.

Ralph Hanger pled guilty to a charge of possession of marijuana. He was fined \$150 fines and costs.

David Gainsley was found guilty of driving without proof of registration or insurance. He was fined \$26 fines and costs.

Thomas M. Graves was found guilty to speeding. He paid \$21 fines and costs.

Want to sell a car? Try a Standard Want Ad!

**WE SHOOT the Works with FOOD VALUES for the 4th!**

# SALE

**YOUR BUDGET WON'T SKYROCKET AT POLLY'S... BECAUSE WE'RE CELEBRATING THE 4th BY SAVING YOU MONEY!**

24-OZ. BOTTLE DEL MONTE CATSUP . . . . . 3 for \$1

28-OZ. CAN CAMPBELL PORK & BEANS, 4 for \$1

11-OZ. BOX KEEBLER ZESTA SALTINES . . . . . 29c

42-OZ. CAN SHORTENING . . . . . 88c

16-OZ. BOTTLE FAYGO POP . . . . . 10c

6-OZ. CAN STAR KIST TUNA . . . . . 3 for \$1

28-OZ. BOTTLE Canada Dry SUMMER MIXES . . . . . 3 for \$1

100-COUNT PKG. 9" ELF PAPER PLATES . . . . . 58c

32-OZ. ELF SALAD DRESSING . . . . . 39c

24-FT. ROLL REYNOLDS HEAVY DUTY ALUMINUM FOIL . . . . . 39c

15-OZ. JOHNSON AEROSOL OFF . . . . . \$1<sup>19</sup>

9-OZ. CAN SURE DEODORANT . . . . . 99c

24-OZ. SCOPE MOUTHWASH . . . . . \$1<sup>39</sup>

30-COUNT PKG. BAND-AIDS . . . . . 51c

12'S ALKA SELTZER . . . . . 40c

16-OZ. SEALTEST LIGHT N' LIVELY COTTAGE CHEESE . . . . . 39c

SWIFT'S BUTTER . . . . . lb. 69c

10-OZ. CAN PET WHIP TOPPING . . . . . 38c

8-OZ. PKG. KRAFT PHILADELPHIA CREAM CHEESE . . . . . 29c

8-OZ. PKG. BORDEN'S FRENCH ONION DIP . . . . . 29c

ALPINE BAKERY SPECIAL! APPLE PIES 8" 49c

BORDEN JUMBO TREAT ICE CREAM 99c Gal.

10-LB. BAG ELF CHARCOAL Briquets 49c

1-OZ. PKG. KOOL-AID 10 for 48c

24-OZ. JAR LEMON AND SUGAR ADDED SALADA TEA MIX 49c

3-OZ. PKG. JELL-O . . 10 for 99c

49-OZ. BOX BURST LAUNDRY Detergent 49c

BORDEN ICE CREAM BARS . . 12 pak 69c

6-OZ. CAN LIBBY'S LEMONADE . . . . . 10c

8-OZ. BANQUET POT PIES . . . . . 18c

12-OZ. CAN FLAVORITE ORANGE JUICE . . . . . 29c

9-OZ. BIRDS EYE COOL WHIP . . . . . 44c

### Chiropractic Has No Cover Up!

We can't fool anyone... we put nothing into the body... nor take anything away... Chiropractic believes in the Divine Wisdom that man was created in the image of God... that every organ has a necessary function which performs wonderfully when the nerve supply to that organ is not interfered with... Chiropractic believes that NOTHING man manufactures on the outside of the body can compare with the natural manufacture of chemicals... INSIDE the body... Chiropractic believes that the POWER which created the body has given that body "something within" to heal that body... Chiropractic proves this daily... and now over 40 million people have experienced that which I am talking about... No, there's no "cover up" in chiropractic... we cannot make you "think" you are better... you really must know you are better... Chiropractic is simple, safe and scientific... those who use it KNOW... those who refuse to use it DON'T KNOW. It's as simple as that!

**YOUR MONEY BACK IF NOT SATISFIED.** Yes, for each new patient who begins care BEFORE July 28... we will offer part of, or all (YOU are the sole judge) your money back if you are not satisfied with what chiropractic does for you. Yes, one year from the date you start care you may request part of, or all of, your money back if not satisfied with what you've received over the period of the one year. If you've ever been in doubt as to the sincerity of our message NOW is the time to do something about it... you have nothing to lose... but your ill health.

... I don't know of a fairer way to deal with sick people... we want you well... your loved ones want you well... you deserve to be well... NOW IS THE TIME to do something about it!! Many have told us of spending hundreds, yes thousands of dollars before attempting Chiropractic care... This is YOUR opportunity to act... what will you do with this opportunity? It is strictly up to you.

**WE ACCEPT ALL PEOPLE REGARDLESS OF CONDITION OR FINANCIAL ABILITY TO PAY...**

... AFTER ONE YEAR if not satisfied with what that money brought you... all you must do to qualify for this privilege is cooperate with us, for your benefit, by keeping all scheduled appointments and keeping your financial account current... otherwise, YOU ARE THE SOLE JUDGE... Fair enough?? I should think so! Make up your mind NOW to give chiropractic the chance it deserves to get you well... give yourself and your body the chance to get well... we'll work together for health's good... and the good of mankind... and our world will be better for it... BE SURE YOU'VE MADE YOUR APPOINTMENT BEFORE July 28th.

**CHIROPRACTIC FOR LIFE**  
CHIROPRACTIC CENTER  
7970 CLARK LAKE RD. CHELSEA, MICH. 475-7633  
We're across the road from Clark Lake on M-52, 1/2 mile north of Waterloo Rd.  
IF LOST, 475-7633

VALUABLE COUPON  
**KOOL-AID**  
1-Oz. Pkg. 10 for 48c  
With \$3.00 purchase. SAVE 10c WITH COUPON  
LIMIT 10 EXPIRES JULY 1, 1973

VALUABLE COUPON  
**SALADA TEA MIX**  
24-Oz. Jar 49c  
With \$3.00 purchase. SAVE 21c WITH COUPON  
LIMIT 1 EXPIRES JULY 1, 1973

VALUABLE COUPON  
**JELL-O**  
3-Oz. Pkg. 10 for 99c  
With \$3.00 purchase. SAVE 39c WITH COUPON  
LIMIT 10 EXPIRES JULY 1, 1973

VALUABLE COUPON  
**LAUNDRY DETERGENT**  
49-Oz. Box 49c  
With \$3.00 purchase. SAVE 30c WITH COUPON  
LIMIT 1 EXPIRES JULY 1, 1973

Legal Notices
The State of Michigan
In the Probate Court for the County of Washtenaw
File No. 49721
Estate of ELBA R. HAUSLER, Deceased.

Kim Alder, Bacardi Shine at Horse Show

The 1973 horse show season has been progressing with distinction and excitement. Kim Alder and Bacardi have been a bright spot in the show business.

+ Services in Our Churches +

CONGREGATIONAL CHURCH (United Church of Christ)
The Rev. Carl Schwarm, Pastor
Sunday, July 1-10:00 a.m.—Worship.
FIRST UNITED METHODIST CHURCH
The Rev. Clive Dickens, Pastor
Sunday, July 1-10:00 a.m.—Worship service.
10:45 a.m.—Congregational meet.

CROSSWORD PUZZLE

Today's Answer
ACROSS
1. On tiptoe
5. Customary
10. Woody plant
12. Bellini opera
13. Familiar Latin phrase
15. Go—tear (carouse); (2 wds.)
16. Portuguese coin
17. Netherlands commune
18. Scot's ancestor
19. Make beloved
22. At liberty
26. Prime, tierce, sept and nones (2 wds.)
28. Taste defeat
29. Rich cakes
30. Cotton
31. Harlem kivi
34. Brown kiwi
35. — of 1812
38. Twiddling one's thumbs (2 wds.)
41. Talked wildly
42. Artist's stand
43. Winged
44. Refuse
DOWN
1. Regarding (2 wds.)
2. At that time

personalized MATCHES

with name or initials imprinted
48-HOUR SERVICE
When Requested
Yellow - Green - Blue
Reg. \$3.00 Value \$2.00
50 Books
METALLIC
Gold - Silver - Light Green
Reg. \$3.50 Value \$2.50
50 Books

The Chelsea Standard

Advertisement for The Chelsea Standard stationery, showing various stationery items like envelopes and letterheads.

JUNE 1/2 PRICE SALE

Rytex Antique Vellum Personalized Stationery
Sale Price (regularly \$10.00)
traditional lettersheets & new semi-notes
This luxurious vellum paper with its subtle laid-mark pattern assures good taste for all your writing needs.

Veterans Council Adopts Resolution

Condemning 'Dodgers'
The Washtenaw County Council of Veterans unanimously supported a resolution submitted by Charles Herbert J. McKune...

YES WE ARE MAKING LONG TERM FARM REAL ESTATE LOANS

Advertisement for YES WE ARE MAKING LONG TERM FARM REAL ESTATE LOANS, featuring the Land Bank logo and contact information.

Official Notice

MEETING OF THE DEXTER TOWNSHIP BOARD
will be held
TUESDAY, JULY 3, 1973 - 8 p.m.
at the Township Hall, 6900 Dexter-Pinckney Rd.

Pinpoints Major Amusements

The Southeast Michigan Travel and Tourist Association not only promotes the important things to do and see in its area—it even shows one how to get there.

Mergers Urged For Integration

The consolidation of city and suburban school districts is the only effective strategy for desegregating schools if existing buildings are to be used, according to the acting dean of Michigan State University's College of Urban Development.

Visit Space Center

Cecil and Jay Freeman visited the world's largest space exhibit during a recent trip to Huntsville, Ala.

BECKER MEMORIALS

6035 Jackson Road
ANN ARBOR, MICHIGAN
P. O. Box 1006
Ph. 769-2411 3645 Jackson Rd. Ann Arbor, Mich. 48106

MAUSOLEUMS \* MONUMENTS BRONZE TABLETS \* MARKERS

Advertisement for Becker Memorials, offering various funeral home services and monuments.

MAIL ORDER COUPON

Mail order coupon for The Chelsea Standard stationery, including fields for name, address, phone, and payment options.



### Engagement Told For Laura Wahl In Texas Home

Mrs. Wahl and her husband, Richard A. Wahl, 52, of 404 S. 4th St., Chelsea, Tex., announced the engagement of their daughter, Laura Elizabeth Wahl, 21, to Mr. E. L. Campbell, 34, of Lawrenceville, Tex.

The bride is a 1976 graduate of Lawrenceville High school and attended North Texas State University in Denton, Tex. She is a member of the national honor organization for student women, and Sigma Tau Delta, a national honor society for English majors.

The couple plan an Aug. 4th wedding at Wesley Methodist church in Corsicana.

Laura's maternal grandmother, Mrs. Maude Pletcher, lives at 620 N. Main in Chelsea. Her maternal grandfather, John J. Rudd, lives in Jackson. Her paternal grandparents are the late Mr. and Mrs. Arthur E. Wahl of Chelsea and Manchester.

### FAT SUSPECTED

Research by nutritionists at Michigan State University shows a substantial relationship between fat intake and longevity. The researchers have found that the greater the fat intake, the shorter the life and the greater the difference between life expectancy and age at death.

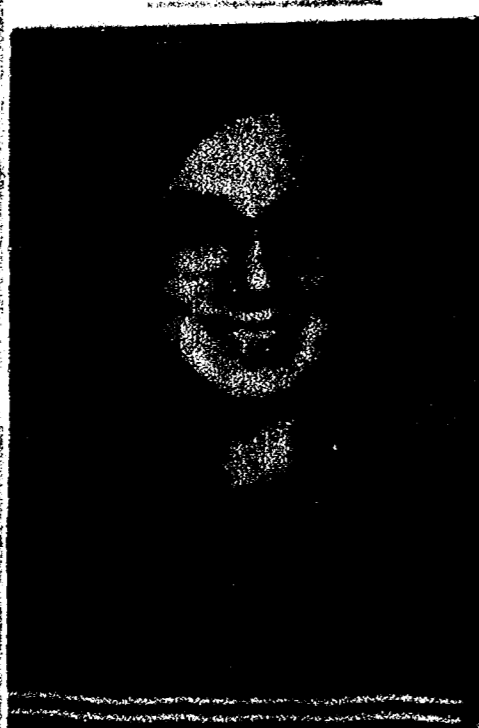
### Ruth Circle Meets At Methodist Home

Ruth Circle of the United Methodist church met at the home of Mrs. Ruth K. Kaler, 2101 S. 1st St., Chelsea, for a meeting of the group on Tuesday.

A gift was presented to Mrs. Kaler from the circle because she is coming to Houston, Texas, to attend to her mother's funeral.

The meeting was then turned over to Mrs. Mac Packard for a few hours. She introduced some new members and visited the remainder of the time.

The next meeting will be Sept. 30 in the Social Center.



Mrs. John R. Short

### Tonya R. Clemons, John R. Short Speak Vows at Immanuel Church

Miss Tonya R. Clemons and John R. Short exchanged wedding vows, June 23, at Chelsea's Immanuel Bible church. Parents of the newlyweds are Mr. and Mrs. Roy Clemons of 12085 Jackson St. and Mr. and Mrs. Charles Short of 6594 Portage Lake Blvd., Pinckney.

The afternoon service was conducted by the pastor of the church, the Rev. LeRoy Johnson. Mrs. David Peebles sang "I Believe" and "Wherever Thou Goest." Timothy Johnson's solo was "Wo Come as Two."

The bride's dress, fashioned out of nylon in a A-line design, was decorated with ruffles circling the bodice and the skirt's edge. The long puffy sleeves ended in lace cuffs. She carried a colonial bouquet of daisies, yellow sweetheart

roses and baby's breath under a floor-length veil attached to a Juliet headpiece.

Bridesmaids, all dressed in floral dresses like that of the matron of honor, included Mrs. Ernest Hinderer, a sister of the bride from Chelsea, Mrs. John Weber, the bridegroom's sister from Ann Arbor, Mrs. Robert Novess from Manchester, and Miss Charity Clemons, a sister of the bride who was a junior bridesmaid.

A corsage of yellow sweetheart roses and white carnations accented the black and white knit costume worn by the mother of the bride. A similar corsage was worn by the mother of the bridegroom who was dressed in a floor-length aqua colored dress.

Other members of the wedding party were John Weber, brother-in-law of the bridegroom, "best man"; Vicki Weber, the bridegroom's niece; flower girl, Scott Deahoff, of Chelsea, ringbearer; and John Hava, John Thurston, and Timothy Thonson, groomsmen, dressed in mint green jackets; and ushers, Charles Clemons and Thomas Clemons, brother of the bride.

A reception in the church basement followed the ceremony. Mrs. Gene Stimac of Ann Arbor watched over the guest book while Mrs. John Thurston, the bridegroom's sister, poured punch. Mrs. John Hava, another sister of the bridegroom, Mrs. Robert Schneider of Chelsea and Mrs. LeRoy Johnson also of Chelsea, all helped with cake and coffee. Miss Jill Kipfmiller of Dexter was the hostess at the event.

The couple headed west for a two-week honeymoon after the festivities. They will return to Mrs. Luther Hale June 21, with 12 members present. They enjoyed a picnic supper.

Guests for the evening were Mrs. Lulu Sweeny and Mrs. Flossie Lake. The meeting opened with a reading by the president, Marion Pickell. A bakeless bake sale was discussed and it was decided that returns should be completed by the September meeting.

The next meeting will be a breakfast on July 19, at the home of Mrs. Gene Coltre at North Lake at 9 a.m.

LYNDON STUDY CLUB  
Lyndon Study Club met Thursday, June 21, at the home of Mrs. Norman Kaiser. A pot-luck dinner was served at 1 p.m. with 16 members and two guests present.

Mrs. G. A. Barton called the meeting to order. A gift and a card for Mrs. Irene Collings, who has been ill this winter, were sent.

The July 19 meeting will be held again at Mrs. Kaiser's home unless it rains.

SENIOR CITIZENS  
Thirty-eight members of Chelsea Senior Citizens attended the June Birthday party Thursday, June 21.

A birthday cake, which climaxed a pot-luck dinner, was made by Lucille Morely and surrounded by bouquets of flowers. Music at the party was provided by John Holzoffer. Group singing followed dinner.

Magic Mirror Beauty Salon  
Open Tuesday thru Friday 9 a.m. to 9 p.m.  
Saturday, 8 a.m. to 3 p.m.  
PHONE 665-0816

### Girl Scout Pet Show Entertains Several Methodist Home Residents

Several Methodist Home residents were entertained recently when Girl Scout Junior Troop 689 was on hand for a pet show. A rabbit, ducks and dogs paraded in the courtyard and delighted those present.

Mrs. Fred Hoffman, troop leader, and Mrs. Thomas Bear, assistant, learned of the interest in animals when one of the residents of the Home celebrated her 93rd birthday and was treated to a visit to an animal shelter. Many of the residents cared for animals and had to part with them when they entered the Methodist Home.

### Scout Troop Preparing for Jamboree Trip

"Jamboree or Bust!" is the cheer that Chelsea Boy Scouts will give as they head for the world's largest scout jamboree the first week in August.

Troop 476, sponsored by the Kiwanis Club, will attend Jamboree East at Moraine State Park, Pa. Fifteen scouts and two leaders will make the trip leaving here Aug. 2, and returning Aug. 9. Their scoutmaster is Charles Stoner, 13375 Noah Rd.

More than 70,000 scouts and leaders are expected at the jamboree. This is the first time that a national jamboree has been held at two different locations. And, for the first time, any registered scout may attend—with no age or advancement requirements.

At the jamboree, scouts will live in a huge tent city and cook their own meals, including mountain trout and steak.

For activities, there's a lot to do, including swimming, boating, canoeing, fishing, several miles of scenic hiking trails, and many areas of sports competition for individuals and troops.

Extensive ecology experiments and demonstrations will be available, plus the big new Arts and Science Expo, where scouts will enter original artwork, musical compositions, and science projects.

The Skill-o-rama will feature hundreds of demonstrations and exhibits ranging from a Hawaiian pig roast to Paul Bunyan log-rolling.

Scouts from Chelsea Troop 425 are also going to the jamboree as part of an Ann Arbor delegation.

### Melvin Buss Earns Academic Scholarship At Oakland University

Melvin H. Buss, an engineering major at Oakland University has been notified that he is one of 81 upperclass Achievement Scholarship recipients.

The scholarships, given in recognition of extraordinary academic accomplishments, will cover tuition costs for the fall and winter semester, 1978-79. The stipends are financed from funds given to the university by several generous donors.

### Personal Notes

Mr. and Mrs. Jeffrey Brunson of San Jose, Calif., were recent house guests of Mr. and Mrs. Floyd Brand of 3145 Sylvan Rd., after driving from California. They visited the Brands, Diane Brunson's parents, and Donna for 11 days.

### VILLAGE BEAUTY SALON

LORETTA - SANDY  
CHERYL - JANICE - CAROL  
107 N. MAIN PHONE 475-1671

OPEN TUESDAY THRU SATURDAY  
Evenings By Appointment

This event was only one of several the Junior troop participated in at the Home. The girls were made aware of the residents early in the fall when they procured names and addresses of several people residing there. They were then able to write notes as well as send birthday wishes to their respective pen pals.

In February, they made old-fashioned Valentines and baked cookies for a party in the game room. This was especially interesting for those girls meeting their pen pals for the first time.

The troop held several parties during the winter months at which time they sang songs, told jokes, played games, and enjoyed refreshments with the ladies present.

The pet show climaxed a valuable year for the girls, and the leaders while making them more aware of other people, it allowed them to make new friends.

### JC Auxiliary Seeks Help for MD Victim

Chelsea's Jaycee Auxiliary is still collecting books to send to Jimmy Kearney of America Fork, U., a 17-year-old suffering from muscular dystrophy.

Drop boxes are located at Polly's, Wash 'n' Dry, Cavanaugh Lake Store and Fairbrother's so that those with books to donate may drop them off. Books will be picked up if the donor calls 475-7321 evenings, or 475-1516 anytime.

According to Vivan Yarger, 100 books have already been sent to Jimmy, who is an avid reader.

Before the last meeting, June 19, the Auxiliary held a family picnic at Pierce Park. The business meeting followed at JoAnn Rowe's home. With the help of co-hostess Ann Steinauer, chocolate and strawberry sundaes were served.

Susan Call, newly-elected president, presided at the meeting which was attended by one guest, Barb Robeson.

### Two Chelsea Students Earn Academic Honors At Olivet College

Kathryn Schafer, daughter of Mr. and Mrs. Robert Schafer of 1575 Pierce Rd. and Ann Travis, daughter of Mr. and Mrs. William Travis of 16 Sycamore Dr., are on the Academic Achievement List for the second semester at Olivet College.

To qualify for this listing, a student must have accumulated at least a 3.5 grade point average for the semester. Grading at Olivet College is on a 4.0 scale.

The Michigan State University libraries contain a rapidly growing collection of 1 1/2 million volumes.

### VIVIANE WOODARD COSMETICS

475-8785  
Dorothy Ortring, Director



Mrs. John Lorrin Jedele

### Joan E. Slane, John L. Jedele Wed at North Sharon Church

John Lorrin Jedele of Dexter took Joan Elizabeth Slane of 19325 of red roses. The bridegroom's mother was dressed in yellow and wore white accessories. Her flowers were peach colored roses.

Acting as best man was Larry Luckhardt of Saline. Lee Seitz, cousin of the bridegroom, and friends, Steve Camburn and Bruce Pratt, ushered guests to their seats.

Guests assembled at Sharon Township Hall for a reception, given by the bride's parents, after the ceremony. Mrs. Allen Alber, Mrs. Arthur Haab, Mrs. Paul Patrick, Mrs. Robert Kuhl and Mrs. Tim Ehms assisted. Lisa McKaig, cousin of the bride, was in charge of the guest book.

The bride left with her new husband for a week in northern Michigan dressed in a yellow and white pant suit. They will reside at 6175 Daly Rd., Dexter, after July 1.

Mrs. Jedele attended Chelsea High and graduated from Manchester High in 1972. She is now employed by Automobile Club of Michigan. Her husband is a graduate of Saline High and is employed by Washtenaw County Road Commission.

Attending the bride were Gina Rebecca Slane, maid of honor, and bridesmaids, Debra Barker, Lou Ann Pratt and Cynthia Purches. They wore taffeta dresses covered in ribboned lace, each in a different pastel color. The ribbons on the bouquets matched their dresses.

The mother of the bride wore a blue floor-length gown, with white accessories, and a corsage of red roses.

### A GREAT TIME FOR THE GOOD TIME Caravelle® by Bulova

Give the gift he or she will appreciate most. Keep them on time in the finest fashion with a precision jeweled, quality-made Caravelle watch.

See our great selection of gift watches. We have the newest styles, the latest features. Caravelle by Bulova. Expensive watches at inexpensive prices. From \$10.95.



25.50 DELEGATE "C" Black markers on gilt dial.  
29.95 RADCLIFF "O" 17 jewels. Green dial.  
32.95 SKIPPER CALENDAR "M" 17 jewels. Automatic.

### WINANS JEWELRY

**SPECIAL**  
Your Choice of Any LADIES OR GIRLS SWIM SUIT 10% Off  
All new this season. Big selection.

**ALL LADIES SHORTS**  
Many brand names. Big selection. 10% Off  
Just in time for a great 4th of July.

This special for Thursday, Friday and Saturday, July 28, 29, 30 Only.

- SHOP -  
**DANCER'S**  
Chelsea's Friendly Dept. Store

**Club and Social Activities**

**REBEKAH PAST PRESIDENTS**  
Past Presidents Club of the Rebekeh Lodge met at the home of Mrs. Luther Hale June 21, with 12 members present. They enjoyed a picnic supper.

Guests for the evening were Mrs. Lulu Sweeny and Mrs. Flossie Lake. The meeting opened with a reading by the president, Marion Pickell. A bakeless bake sale was discussed and it was decided that returns should be completed by the September meeting.

The next meeting will be a breakfast on July 19, at the home of Mrs. Gene Coltre at North Lake at 9 a.m.

**LYNDON STUDY CLUB**  
Lyndon Study Club met Thursday, June 21, at the home of Mrs. Norman Kaiser. A pot-luck dinner was served at 1 p.m. with 16 members and two guests present.

Mrs. G. A. Barton called the meeting to order. A gift and a card for Mrs. Irene Collings, who has been ill this winter, were sent.

The July 19 meeting will be held again at Mrs. Kaiser's home unless it rains.

**SENIOR CITIZENS**  
Thirty-eight members of Chelsea Senior Citizens attended the June Birthday party Thursday, June 21.

A birthday cake, which climaxed a pot-luck dinner, was made by Lucille Morely and surrounded by bouquets of flowers. Music at the party was provided by John Holzoffer. Group singing followed dinner.

**Magic Mirror Beauty Salon**  
Open Tuesday thru Friday 9 a.m. to 9 p.m.  
Saturday, 8 a.m. to 3 p.m.  
PHONE 665-0816

**Personal Notes**

Mr. and Mrs. Jeffrey Brunson of San Jose, Calif., were recent house guests of Mr. and Mrs. Floyd Brand of 3145 Sylvan Rd., after driving from California. They visited the Brands, Diane Brunson's parents, and Donna for 11 days.

**VILLAGE BEAUTY SALON**  
LORETTA - SANDY  
CHERYL - JANICE - CAROL  
107 N. MAIN PHONE 475-1671  
OPEN TUESDAY THRU SATURDAY  
Evenings By Appointment

**VIVIANE WOODARD COSMETICS**  
475-8785  
Dorothy Ortring, Director

**Look how little it takes to take a trip by phone.**

FOR EXAMPLE, IF YOU LIVE IN JACKSON

and want to call Cost for 5 minutes\*

TOLEDO ..... \$ .80  
CHICAGO ..... .85  
CLEVELAND ..... .80  
NEW YORK CITY ..... 1.00  
PITTSBURGH ..... .85  
MIAMI ..... 1.10  
SEATTLE ..... 1.25  
WASHINGTON, D. C. .... 1.00

\*Rates shown (tax is not included) are for evening calls. Weekend rates are even lower! Evening rates are for direct dial, station-to-station calls Sunday through Friday, 5 p.m. to 11 p.m. They also apply to station-to-station calls placed with an operator where direct dialing facilities are not available.

**Michigan Bell**  
Don't hesitate to call

### Fast Pitch Softball Schedule All Games at CMS Field

Time	Home Team	Visitor
6:30 p.m.	Wolverine Bar vs. Chelsea Ladies	Chelsea Ladies vs. Chelsea Ladies
7:00 p.m.	Wolverine Bar vs. Chelsea Ladies	Chelsea Ladies vs. Chelsea Ladies
7:30 p.m.	Wolverine Bar vs. Chelsea Ladies	Chelsea Ladies vs. Chelsea Ladies
8:00 p.m.	Wolverine Bar vs. Chelsea Ladies	Chelsea Ladies vs. Chelsea Ladies
8:30 p.m.	Wolverine Bar vs. Chelsea Ladies	Chelsea Ladies vs. Chelsea Ladies
9:00 p.m.	Wolverine Bar vs. Chelsea Ladies	Chelsea Ladies vs. Chelsea Ladies
9:30 p.m.	Wolverine Bar vs. Chelsea Ladies	Chelsea Ladies vs. Chelsea Ladies
10:00 p.m.	Wolverine Bar vs. Chelsea Ladies	Chelsea Ladies vs. Chelsea Ladies
10:30 p.m.	Wolverine Bar vs. Chelsea Ladies	Chelsea Ladies vs. Chelsea Ladies
11:00 p.m.	Wolverine Bar vs. Chelsea Ladies	Chelsea Ladies vs. Chelsea Ladies
11:30 p.m.	Wolverine Bar vs. Chelsea Ladies	Chelsea Ladies vs. Chelsea Ladies
12:00 a.m.	Wolverine Bar vs. Chelsea Ladies	Chelsea Ladies vs. Chelsea Ladies

### Slow Pitch Softball Schedule

Time	Home Team	Visitor
6:30 p.m.	Wolverine Bar vs. Chelsea Ladies	Chelsea Ladies vs. Chelsea Ladies
7:00 p.m.	Wolverine Bar vs. Chelsea Ladies	Chelsea Ladies vs. Chelsea Ladies
7:30 p.m.	Wolverine Bar vs. Chelsea Ladies	Chelsea Ladies vs. Chelsea Ladies
8:00 p.m.	Wolverine Bar vs. Chelsea Ladies	Chelsea Ladies vs. Chelsea Ladies
8:30 p.m.	Wolverine Bar vs. Chelsea Ladies	Chelsea Ladies vs. Chelsea Ladies
9:00 p.m.	Wolverine Bar vs. Chelsea Ladies	Chelsea Ladies vs. Chelsea Ladies
9:30 p.m.	Wolverine Bar vs. Chelsea Ladies	Chelsea Ladies vs. Chelsea Ladies
10:00 p.m.	Wolverine Bar vs. Chelsea Ladies	Chelsea Ladies vs. Chelsea Ladies
10:30 p.m.	Wolverine Bar vs. Chelsea Ladies	Chelsea Ladies vs. Chelsea Ladies
11:00 p.m.	Wolverine Bar vs. Chelsea Ladies	Chelsea Ladies vs. Chelsea Ladies
11:30 p.m.	Wolverine Bar vs. Chelsea Ladies	Chelsea Ladies vs. Chelsea Ladies
12:00 a.m.	Wolverine Bar vs. Chelsea Ladies	Chelsea Ladies vs. Chelsea Ladies

**CHELSEA FINANCE CORP.**  
\$25 to \$1,500  
For Any Worthwhile Purpose  
See or Call **FRANK HILL** at 475-8631  
111 PARK STREET CHELSEA, MICH.

**MSU Increases Dormitory Rates**  
An increase of \$25 a term in dormitory rates at Michigan State University has been approved by the MSU Board of Trustees.  
Effective fall term 1973, the rate for double-room occupancy will be \$405 a term.  
Lyle Thorburn, manager of dormitories and food services at MSU, said the increase will help cover wage adjustments and increased costs due to improvements in the Social Security program.  
The rates were last increased in the 1971-72 school year, so that the recommended increase of 6.5 percent covers the increased costs in operations over a two-year period.

**HAVE SOME FUN**  
Beat Your Wife Tonight!  
Bowling's fun at Chelsea Lanes  
**Tuesday Night Special**  
Husband and Wife Bowl  
Husband Pays - Wife Free!  
7:00 p.m. to 10:00 p.m.  
18 Astrolino Lanes - Billiards & Air Hockey  
MICHIGAN STATE LOTTERY TICKET AGENT  
**CHELSEA LANES, Inc.**  
PHONE 475-8141  
1189 M-52 CHELSEA

**REAL ESTATE ADVICE**  
RESIDENTIAL PROPERTIES  
COMMERCIAL - INDUSTRIAL  
FARMS  
VACANT LANDS  
**SPEAR & ASSOCIATES, REALTORS**  
1585 Pauline Plaza 769-3750  
ELLIS PRATT 428-8046

### Dan Robbins Is New MUCC Vice-President

Grass Lake's Dan Robbins was elected one of three vice-presidents of the Michigan United Conservation Clubs at the annual convention, June 21-23, at Alpena.

Delegates, 275 strong, from clubs all over the state attended the convention, representing 135,000 members. Three hundred different conservation clubs participated, submitting 108 resolutions for the convention's consideration.

Two resolutions submitted by the Tri-County Sportsman Club of Salmie were discussed and accepted by the convention. One resolution urged the discontinuation of the use of fish and game money to subsidize commercial fishing. The Tri-County Sportsman's other resolution opposed construction of the Southeastern Michigan Interceptor, the sewer.

In addition to the governor and the lieutenant governor, Paul Leach, executive director of the United Conservation Clubs, spoke to the group, recommending that the mouth of the Platte River be preserved and not used as a site for marinas and other developments.

The new president of the Michigan United Conservation Clubs is Roger Wenk of Byron. Vice-presidents, in addition to Robbins, are Ryan Bontekoe of Marion, and C. S. McCormack of Edwardsburg. Hale Pearce of Coldwater was re-elected treasurer.

Robbins, a past-president of the Tri-County Sportsman League of Saline, is an avid sportsman dedicated to the idea that clubs should be concerned with preserving the wilderness for the outdoorsman.

**Camper Ticketed, Pleads Guilty to DUIL Charge**  
After being flagged down by a concerned motorist while on patrol, June 22, Chelsea police Officer Roger Graves set out on the trail of what the motorist had described as a drunken driver. Shortly thereafter he arrested Roger Lee Crist, a camper at Bruin Lake, for driving under the influence of liquor.

According to Graves' report, he followed the Mercury Comet, driven by Crist, as it meandered across the center line going north on Main St. Graves said the car proceeded in an "erratic" manner, until he stopped the vehicle.

Graves reported that Crist, while being questioned, displayed evidence of being intoxicated. Crist was unable to produce a driver's license. It is reported to have been suspended.

Crist was arraigned in Judge Henry Arkison's court, Monday. He pled guilty to driving under the influence of liquor. He was fined \$250 and placed on two years probation. He was also ordered to 10 days on the work program.

In addition, Crist was fined \$75 and sentenced to three days on the Chelsea work program for driving without a license.

**Recreation Softball League**

**Slow Pitch League**  
AMERICAN

Team	W	L
Walt's Clippers	3	0
IPSCO	2	1
Rockwell	1	2
Lanewood	0	3

NATIONAL

Team	W	L
Rulea Farms	2	1
Village Motor Sales	2	1
Methodist Church	1	2
Mark IV	1	2

**Fast Pitch League**  
AMERICAN

Team	W	L
Wolverine Bar	4	0
M & M Gravel	3	1
Zion Lutheran	2	2
Jiffy Mix	0	3
Methodist Home	0	3

NATIONAL

Team	W	L
Westgate	3	0
St. Paul's Church	3	1
Sweepers	1	1
Chelsea Merchants	1	2
Adair Printing	0	4

**BOWLING**  
**Men's Two-Lite Doubles**  
Standings as of June 25

Player	W	L
J. Harook-N. Fahrner	35	14
Lyerla-Beason	33	16
Super "8's"	33	16
Bob & Bill Maier	33	16
Ted & Don	33	16
Armstrong-Sanderson	28	21
Bauer-Herrst	27	22
Doug-Floyd	24	25
E. Harook-A. Sannes	23	26
McKinnon-Ford	21	28
Bollinger-Buckingham	18	31
Weir-Cotton	15	34
Snyder-McCalla	14	35
Bowers-Bauer	12	37

500 series: E. GreenLeaf, 630; R. Beason, 625; N. Fahrner, 623; R. Beason, 571; A. Peterson, 555; F. Northrup, 549; E. Harook, 545; G. Cotton, 536; A. Nixon, 535; J. Lyeria, 521; J. Harook, 520; M. Ford, 514; A. Sannes, 501.  
200 games: R. Beason, 527, 237; 201; E. GreenLeaf, 231, 203; N. Fahrner, 215, 208, 200; R. Northrup, 212; A. Peterson, 206;

**FOOT EROSION?**  
Penguins have nested so many centuries on Dassen Island at the tip of South Africa that millions upon millions of their feet have worn away even rocks. The penguins keep to paths that run nearly arrow-straight from nesting ground to sea.

Subscribe today to The Standard!

### Camper Ticketed, Pleads Guilty to DUIL Charge

Richard Schanz of 15 Hickory lost a boy's bike, a cabin tent, and two sleeping bags to thieves this week.

According to police reports a three-speed boy's bike was taken from Schanz's yard. The 26-inch red Huffy can be identified by bent handlebars and a missing chain guard.

The tent and sleeping bags were taken from the vacant lot next to Schanz's property. His youngsters had erected the tent planning to play in it and then left it there. Thieves took it during the night of June 21.

The tent is a K-Mart brand, 8'x10' cabin tent. The sleeping bags are blue with orange lining. Together they represent approximately a \$112 loss.

### Thieves Take Bike, Camping Equipment From Schanz Home

Senator Gilbert E. Bursley (R-Ann Arbor) has introduced and won Senate Education Committee approval for a bill to provide \$5 million in tuition grants, chiefly for community college students.

The grants would be up to \$500 per year and would be limited to students demonstrating severe financial need.

Senator Bursley, Assistant Majority Leader of the Senate and chairman of the Senate Education Committee, pointed out that although the new type of grants would not be limited by law to community college students, the bulk of the funds would probably go to such students.

"At present," Bursley said, "about 50 percent of all beginning college students in Michigan enroll in community colleges."

"Yet only about 2 percent of our state scholarship and tuition grant funds go to such students.

"This is because our State Competitive Scholarship Program requires students to demonstrate an academic ability as well as financial need while our Tuition Grant Program serves only those students interested in attending private institutions and without sufficient resources of their own to meet the high costs of such schools.

"There is a clear need for a new grant program to reach low-income students who are not necessarily of superior academic ability, particularly in our community colleges."

### Bursley Bill Would Help Community College Students

Have Lunch Today at the **MARK IV LOUNGE**  
PLEASANT - AIR-CONDITIONED ADULTS  
Join **BOB LYONS** Saturday Night Sing-Along



Keep on truckin' your Suzuki through trails and trials. We'll help you pick the best bike, modify it to get maximum performance, and repair it when needed. You've got to ride it yourself.

**SUZUKI-ANN ARBOR**  
4646 WASHINGTON NEAR US-23 (313) 971-4310

**Our compact car is more car than theirs.**  
**Make us prove it.**

Compare any way you want. **We welcome it.**

- Small enough to park easily.
- Big enough to seat five, not four.
- More hip room in the rear seat than Cadillac El Dorado.
- Quality-built with unibody construction and torsion-bar suspension.
- Standard electronic ignition gives up to 35% more starting voltage than conventional systems.

**Plymouth Duster.**  
AUTHORIZED DEALER **CHRYSLER MOTORS CORPORATION**  
**Plymouth**

**VILLAGE MOTOR SALES, INC.**  
1185 MANCHESTER ROAD CHELSEA, MICHIGAN